

ARCHITECTURE OF REPOSE:
CREATING MOMENTS FOR RETREAT AND INTIMACY

A Thesis

Submitted to the

Faculty of Miami University

In partial fulfillment of

The requirements for the degree of

Master of Architecture

Department of Architecture and Interior Design

By

JORDAN ODOR

Miami University

Oxford, Ohio

2016

Advisor _____
(John Reynolds)

Reader _____
(Dick Overton)

Reader _____
(Gülen Çevik)

Architecture of Repose: Creating Moments for Retreat and Intimacy

JORDAN ODOR
Miami University

ABSTRACT

The fast-paced nature of contemporary culture acts as a catalyst for anxiety due to overstimulation. This paper explores how the built environment can be designed in order to bring people from a state of overstimulation to a state of dignified calmness and composure. The goal of this exploration is to understand architecture's ability to help people live thoughtful and relational lives. Research continues to prove the links between the built environment and personal well-being. What are the qualities of places that relieve us from the disharmonies of contemporary life and lead us towards a life of intimacy and repose? This investigation is explored through the analysis of three case studies. The first case study is a combination of analysis and an experiential description of a walk through Chicago to Millennium Park in downtown Chicago, Illinois. The second case study explores Fay Jones' Thorncrown Chapel in Eureka Springs, Arkansas. This discussion is largely informed by writings from "Outside the Pale": The Architecture of Fay Jones. The third case study analyzes the Japanese tea hut typology and the roji, the connected entrance path, as written about by authors Kakuzo Okakura and Ann Cline. The reader will learn how spaces and environments can affect personal and social well-being. The result of this discourse will be a greater understanding of how environments can provide relief and retreat for the refreshment of an anxious culture.

INTRODUCTION

Every man should have a place where he can have communion with himself and his surroundings, a personal environment free from disharmony and frustrations, a place to nurture his ideals and aspirations. – Fay Jones¹

The influence of architecture in our lives goes beyond the fulfillment of basic human needs for shelter and safety. The environments we encounter each day influence our perception of the world, as well as how we view ourselves within it. The spaces we inhabit help us identify ourselves within a greater context and direct our actions within those spaces. Through our senses we experience environments that affect both our physical and emotional well-being. Merriam-Webster defines well-being as "the state of being happy, healthy, or prosperous." Quantitative research has continued to show connections between environments and personal well-being. For example, background noise in the workplace is known to "increase employees' stress hormone levels, undermine short-term memory, reading comprehension and willingness to engage others."² For architects, there are opportunities to not only provide shelter, but also environments in which people can better relate with others while simultaneously gaining crucial self-awareness.

Society is experiencing anxiety due to overstimulation that is impairing personal well-being. This overstimulation hinders personal

relationships, productivity in the workplace and individual health. Environmental factors are not at fault for all of these stresses. The fast-paced nature of contemporary culture acts as a catalyst for many problems of anxiety due to overstimulation. Overstimulated individuals can reach a point of full saturation that is damaging to their health in many ways.³ This discourse serves as an exploration into how environments can provide relief and retreat for the refreshment of an anxious culture.

The purpose of this exploration is ultimately to gain an understanding of spaces that bring us to a state of repose. Merriam-Webster defines repose as, "A state of resting after exertion or strain; eternal or heavenly rest." While the stress affects many aspects of human life, I am most concerned with how they affect relational well-being. I believe that when someone comes to a state of repose, they are able to better relate with others as well as themselves. This exploration's purpose is motivated by my religious and personal beliefs that we are to be in meaningful relationships with God and with others. Regardless of one's beliefs, the benefits of understanding the environment's effects on relational and personal well-being can be of benefit to all. What are the characteristics of spaces that will lead to a sense of repose? What are the qualities of places that offer relief from the disharmonies of contemporary life and lead towards a life of dignified calmness and composure? These questions ask how the holistic human being functions, relates and dwells within the world. This exploration has to do with quality of life and how one lives.

METHODOLOGY

In order to better understand architecture of repose, the primary exploratory method is the analysis of three case studies. These three cases serve as examples of retreats within both man-made and natural contexts. The first case study is a combination of analysis combined with personal experience of a walk through Chicago to the Pritzker Pavilion in Millennium Park in Chicago, Illinois. The second case study explores Fay Jones' Thorncrowne Chapel in Eureka Springs, Arkansas, which is largely informed by writings on Jones' collective works.

The third case study analyzes the Japanese tea hut typology and the roji, the connected entrance path, as written about by authors Kakuzo Okakura and Ann Cline.

These case studies were chosen because of their varying characteristics, as well as their varying degrees of removal from the density of city life: Millennium Park in the city, Thorncrowne Chapel in a far removed area from the city, and the tea hut with no defining relationship to the proximity of a city. The cases are discussed in terms of their creation of place as discussed by Martin Heidegger and Christian Norberg-Schulz, as this has to do with how we dwell and how we live. The cases are assessed in terms of their provision for holistic human needs, which are defined by psychologist, Abraham Maslow. Finally, they are examined based upon their sensorial experience that is specific to their place. This has to do with their implementation of materials, amongst other phenomenal factors.

These explorations bring forth conclusions of the qualities of places that offer relief from the disharmonies of contemporary culture, which lead to an understanding of how to design places for retreat and repose.

CASE 1: WALK TO MILLENNIUM PARK, CHICAGO, IL

In September of 2014, I had the opportunity to travel to Chicago for a weekend of exploration with colleagues. Upon arrival at our hotel, I was awestruck by the degree to which the city of Chicago had been built up. I had feelings of comic disbelief and discomfort as I looked out of our hotel's bedroom window. I stared across the street at a desolate concrete yard that surrounded a ten-story abandoned building. I was disturbed that the only sense of nature that remained in my view was of the sky and of the unrestrained weeds that were growing from the concrete yard. There was uniformity in the building's design and in the materiality of the place.



Figure 1. Concrete yard across from hotel.

Concrete, asphalt and metal reigned supreme as the most commonly used materials within the vicinity. The scale of the neighboring building made it feel alien to my entire body. The hard materials were cold to the touch and reflected harsh sounds at the passing of each car. I had come for a weekend in the city but I soon desired an escape to the woods.

As we left our hotel and journeyed towards the city, we walked across the intersection of Jackson Boulevard and La Salle Street. We were deep within Chicago’s urban center and the area displayed little of resemblance to a natural landscape. It was an alternative, man-made landscape that lacked human relation and intimacy. The monumental buildings displayed strength through the breadth and width of their structural members. The pediments displayed ornament and detail. The rustication of the buildings beyond created diversity within facades and a sense of order and hierarchy. However, these buildings did not relate to the human scale. In contrast with my group of colleagues, nearly all that seemed to exist were extensions of buildings to the sky.



Figure 2. Intersection of Jackson Blvd. and La Salle St.

The idea of the natural landscape gets lost in the vertical nature of downtown Chicago. For Christian Norberg-Schultz, an understanding of how one dwells in space is in relation to the natural landscape. How are we to relate to our surroundings when our environment has

included the vast removal of the natural landscape? With the replacement of the man-made for the natural, is there a newfound difficulty in how to relate to the new landscape? This absence of identification inhibits the way one dwells. Architect and architecture professor Ann Cline questions this man-made environment but acknowledges its relevance in contemporary society.

As we are born into the air, we are born into buildings. After that, we tend to take both for granted. The frailty of our human bodies... make[s] buildings so necessary and possible that they don’t seem artificial at all. Instead, they seem an extension of the earth’s circumstance and our own being in the world.⁴

After walking through the city for a while, we were in need of a reprieve. We knew we were close to Millennium Park so we decided to go there. Upon arrival, the park seemed to be an oasis within the city. The boundary of vegetation acted as a visual and auditory buffer between the sounds of the city and us. Continuing on, we finally came to rest at the lawn of the Pritzker Pavilion.



Figure 3. Trellis Superstructure.

Underneath the steel trellis structure, I finally felt as though I could relax. This area was unique from the rest of the city. Once I was removed from the lowly streets between the buildings, I was able to orient myself within the area. Where I once felt an ambiguity of place due to uniformity and cosmic scale, I now felt certain and assured of where I was. The horizontal interweaving gestures of the trellis structure suggested a positive communal environment as opposed to the stark individuality felt while walking under the domineering shadows of the vertical buildings.

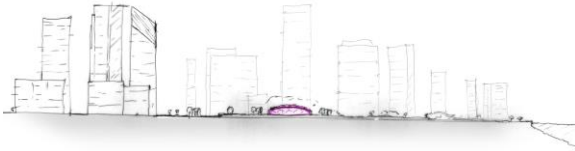


Figure 4. Scale relation and city presencing.

In *Genius Loci: Towards a Phenomenology of Architecture*, Christian Norberg-Schulz discusses the creation of place through the placement of an entity within the natural landscape. Norberg-Schulz is referencing Martin Heidegger's illustration of a bridge that "visualizes, symbolizes and gathers, and makes the environment become a unified whole."⁵ In the illustration, a bridge is placed across a stream. Heidegger continues to explain that the land on either side of the bridge and the stream did not truly exist until the bridge was placed there. Norberg-Schulz "emphasize[s] that the [natural] landscape as such gets its value through the bridge. Before, the meaning of the landscape was 'hidden,' and the building of the bridge brings it out into the open."⁶ Norberg-Schulz writes that architecture exists to uncover the potential meaning in the environment.⁷

How do we relate when the meaning that has been 'uncovered' in the environment becomes ambiguous? How does one identify a place within a natural landscape that no longer exists? Downtown Chicago is now almost entirely a man-made environment rather than a natural one. It is for this reason that Millennium Park is so crucial to the whole of Chicago. Continuing off of Heidegger's illustration, the park offers identification similar to how the bridge does, in that it reestablishes place for the individual within the man-made environment. In the same way that the bridge defined the stream, the park defines the city.

Underneath the structural trellis, I was both outside and inside. The scale of my surroundings was greatly reduced. The open structure above allowed me to feel secure yet open to the sky and environment. I was mentally sheltered from the visual presencing of the city. The steel and concrete superstructure was met by greenery at its bases. The structure appeared powerful in its span and width of members yet it was not domineering. The combination of power and grace in the structure evoked a sense of ease for each of us.



Figure 5. Millennium Park boardwalk.

We left the park to go exploring buildings to the north, only to once again come back to the park at a later hour. This time we walked just south of the superstructure along the wooden boardwalk. The boardwalk's unfinished wood alongside a stream of slowly running water provided a calming and relaxing setting. The softness of the various surrounding grasses and bushes buffered us from the city enough that we could view the city's architectural diversity with much appreciation.

Relating to our experience in the park, a study was done where natural environments were proven to bring attention restoration to the subjects tested. Throughout the day, especially the work day, peoples' minds become fatigued from long periods of voluntary attention. The results showed that time spent in restorative environments with space for resting "can aid in renewing voluntary attention."⁸ The takeaway was that when urban designers or architects are planning out spaces, they should "consider the importance of accessible natural environments... particularly in downtown areas where there are many fatigue-inducing elements."⁹ This concept is crucial to understand, especially when creating place for refreshment and repose for people living an active life in the density of a city.

CASE 2: THORNCROWN CHAPEL, EUREKA SPRINGS, AR



Figure 6. Photographs of Thorncrown Chapel.

Thorncrowne Chapel was designed by regionalist architect Fay Jones and was completed in 1980. It is an “expression of glass and wood”¹⁰ that rises towards the sky adjacent to its neighboring trees. Jones believed there was benefit that could come from placing oneself within nature.

If what we build, our interventions in the natural situation, aligns itself with the attributes of nature, perhaps it can... inspire the inhabitants to align themselves in a more beneficial and meaningful way with the natural forces, the natural conditions, the natural rhythms of life. Surely there are benefits to be derived from living close to, and in harmony with nature.¹¹

Regarding earth and sky, Jones was concerned with the location and the placement of the building. As a pupil who was influenced by Frank Lloyd Wright, Jones insisted that the building should not be on, but “of the hill.”¹² In its creation of place, Thorncrowne does not dominate the site by crowning the hill; rather, it is among the trees and within the hill. Jones believed that “man and nature should benefit immeasurably from one another.”¹³ In this way, there is a harmony between the man-made and the natural environment. This harmony is meant to be intangibly understood by visitors who attend the chapel.

The chapel carries a visual and material connection between the interior and the exterior. There are moments that are obscured where the building ends and nature begins. One moment designed by Jones is at the seamless connection of glass to stone in place of a bottom window sill. For the visitor of this space, they



Figure 7. Left; Photograph of glass-stone connection. Right; Relation of interior and exterior.

are physically grounded and enclosed but mentally open to the surrounding context. Another way that the chapel grounds the user is by giving reference to the sky through the ceiling skylight and clerestory. In looking up, it is as if one is peering through the trees into the

sky. A visitor is enclosed and sheltered yet perceptually open to the natural landscape.

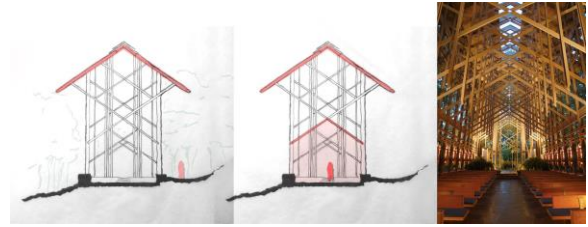


Figure 8. Left; Scale relation to exterior. Middle; Scale relation to interior. Right: Photograph of interior.

As one approaches the exterior, they are dwarfed by the chapel which rises forty-eight feet.¹⁴ As one enters, however, the tall interior space plays with one’s spatial perception. When seated and facing forward, the repetition of the wooden structure alludes to separation of interior spaces within the open volume. This repetition resembles multiple planes that slice through the air, suggesting multiple levels to the space. The lowest protruding diagonal members disrupt the vertical nature of the volume. The apparent volume of the room is brought down to a smaller, more intimate scale.

The implementation of materials is of great significance to the chapel’s design. The material choices are responsive to the natural environment. The main materials used are a series of two-by wood pieces, stone, sheets of glass and primary steel members. The primary use of the wood pieces is in the structural frame in the open air above the seating. The structural wood pattern imitates the complexity of the forest. Although the structure looks varied and complicated in a perspectival view, the overlaying diagonal pattern is simple and orderly. The mathematical order of the structure turns it into an expressive device that adds layers to the space.¹⁵ As one sits and observes the surroundings, the repetitive pattern of the structure leads one’s eyes upward and into the space.¹⁶ The simplicity and layering within this chapel provides opportunity for one to sit in repose to contemplate their situation.

The multiple sub-spaces created within the frame allow for variations of perspective and thought. Another subspace is created in the detailed connection between the diagonal wood members. The empty space in this connection

creates a metaphorical void for one's mind to fill.

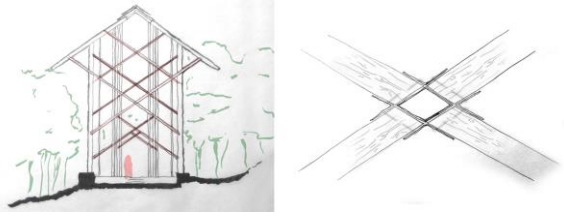


Figure 9. Left; Section through diagonal members. Right; Diagonal two-by-two detail representing void.

Although the chapel includes various design moves that play with one's perceptions, there is an ordered simplicity to the space. Jones claims that he gleaned the idea of simplicity in design from his mentor, Frank Lloyd Wright. Regarding Wright's teachings Jones said,

I couldn't quite see why he was preaching simplicity while designing buildings that had complex forms and complex spaces. I was equating simplicity with plainness. It became clear that the idea was more involved, multidimensional. I think there's a difference between something that is complicated and something that is complex; there's a difference between simplicity and plainness.¹⁷

When considering designing for an anxiously overstimulated culture, the ideas of simplicity and repose in Thorncrown Chapel offer thoughtful suggestions. This space gives the opportunity for an individual's thoughts to transcend to something greater. At the same time, the intimate scale of the interior space accepts communal gathering. The same design brings about both a vertical and a horizontal nature; providing opportunities for people to relate with others as well as with themselves.

CASE 3: THE TEA ROOM AND THE ROJI



Figure 10. Left; Roji walkway. Middle; Tea pavilion. Right; Tea room.

In the fifteenth century, Japan elevated the association of tea from poetry and amusement to a form of aestheticism known as Teism. The values held in Teism lead towards a life of humility, cleanliness and simplicity.¹⁸ An eastern philosophy that came to take up ideals of Teism is called Zennism, which has to do with the stripping down of things to discover how one should best live.¹⁹ It was from a Zen ritual that the tea ceremony began.²⁰ And so, the necessity for a space to perform the ceremony was created. The tea room became a physical representation of the ideals of Teism and Zennism. The tea room became a representation of simplicity and purism.²¹

The tea room is a retreat from the outside world. "One may be in the midst of a city, and yet feel as if [they] were in the forest far away from the dust and din of civilization."²² The serenity of the room is attributed to its stripped down and unadorned nature. Wood and bamboo are commonly used as finished surfaces. No great attention is called to any of the decorations in the tea room. There is a "fear of repetition" in the decorations, colors and design in order to prevent monotony.²³ This is done in order to aid the participant in focus and thought. In the tea room there is a conscious decision to "[leave] something unfinished for the play of the imagination to complete."²⁴



Figure 11. Roji garden walkway at Nassim Park Residences designed by Shunmyo Masuno.

Leading to the tea room is a garden path called the roji. According to Zen garden designer Shunmyo Masuno, the roji, meaning "dewy ground," is a carefully designed transitional space for the purpose of bringing forth repose prior to beginning the tea ceremony.²⁵ According to the author, Kakuzo Okakura, "The roji was intended to break the connection with the outside world, and to produce a fresh sensation conducive to the full enjoyment of aestheticism in the tea-room itself."²⁶

The tea room and the roji hold an unmistakable place of value for individuals of Zennism. In contemporary western society, these spaces

would have a unique sense of place largely due to their sense of emptiness and unadorned nature. They both provide spaces for relief and refreshment. If a place akin to the roji or the tea room were in an urban context, it would be of great benefit for overstimulated individuals for the betterment of their well-being.

THE NEED FOR A RETREAT

In a discussion with John Johnson, a pastor of a local church in Oxford, OH, I asked him his thoughts on calming and refreshing spaces. During the conversation, he mentioned that every year he attends a silent retreat at an abbey. He believed that the silence was necessary for him as a human being. During our conversation, I asked him about his favorite place to go while at the abbey. To my surprise, he said that it wasn't the main sanctuary; rather, it was in the personal and intimate spaces that he felt most at peace. His favorite places were in the library and on a trail that circulates the abbey's grounds. Jokingly, he remarked that when he returns from the retreat, his wife asks the question, "What happened to my husband?" It was in the context of nature that John felt renewed. Every year John proves the connection with the way we dwell in space and our personal lives.²⁷

At a leadership retreat in August of 2015, I attended an interview of Ed Catmull, the co-founder of Pixar Animation Studios and the president of Walt Disney Animation Studios. The interview was primarily about creativity, storytelling and team-building. However, in the final three minutes of the interview, the conversation took a turn. Ed spoke about his need for personal retreats to refresh his mind. "Being in a calming place allows me to come back with a new perspective... Organizations should be balanced, but so should our lives... To do that we need to take care of our soul."²⁸ Ed urges that people are in need of regular retreats to rejuvenate the mind and gain a new perspective. The retreat helps him to go back to his creative work feeling more balanced and refreshed.

In May of 2015, I travelled to Kauai, Hawaii, on my honeymoon with my newly wedded wife.

Kauai is known as the most untouched and natural of the Hawaiian Islands. While we were there, we enjoyed the beauty found in the natural environment. It was the ultimate retreat of refreshment and repose.



Figure 12. Enjoying Kauai.

At the time, I was convinced that everyone needed to have an experience like we did to get away from the stresses of contemporary culture. While Kauai is beautiful, it is not a viable option for the majority of people. Most people are in need of places of temporary relief and retreat that exist in the areas where they live normal life. Overstimulated individuals need places for daily refreshment and repose.

MOVING FORWARD; CONCLUSIONS

All people, especially the overstimulated, are in need of places where they can be relieved from the disharmonies and frustrations of life. Through their relief will come a life of greater personal and relational well-being. Through the analysis of the case studies, I have come to believe that there are (at least) three main concepts to consider when designing place of repose. They must contain the following qualities.

Balance

Something happens where buildings meet nature. As was the case with the three case studies, there was a balance of integration with the natural and the man-made environments. This recognition of nature within the man-made may bring about a harmony that can be restorative for the individual.

Simplicity

There should be an innate simplicity to the design that does not distract or overwhelm the user of the space. This does not mean that the space has to be disinteresting. As seen in Thorncrown Chapel, its design and structure are simple rather than plain; complex rather than complicated.²⁹

Emptiness

Emptiness leaves room in the mind for things unknown and unfinished. There exists an innate grandeur in the wild and unknown. In Bachelard's *The Poetics of Space*, He refers to this grandeur as "intimate immensity."³⁰ This immensity is felt when we allow the mind to be still and roam. In the emptiness, we allow our mind to be still and roam as one would in the void felt in the tea room or in Thorncrown Chapel.

In creating places of retreat for overstimulated individuals, architecture of repose can bring about an intimacy that will be for the benefit and well-being of all, both now and in the future.

REFERENCES

- ¹ "Outside the Pale": The Architecture of Fay Jones. University of Arkansas Press, 1999, 34.
- ² "A Holistic View: Body Mind Environment." Steelcase.
- ³ Meindl, Susan. "Living Too Close To Edge." Talent Develop. August 19, 2010.
- ⁴ Cline, Ann. A Hut of One's Own: Life Outside the Circle of Architecture. Vol. 17. Cambridge, MA: MIT Press, 1997, 107.
- ⁵ Norberg-Schulz, Christian. Genius loci: Towards a Phenomenology of Architecture. Rizzoli, 1980, 18.
- ⁶ Ibid.
- ⁷ Ibid.
- ⁸ Berto, Rita. "Exposure to Restorative Environments Helps Restore Attentional Capacity." InformeDesign. 2005.
- ⁹ Ibid.
- ¹⁰ "Outside the Pale": The Architecture of Fay Jones. University of Arkansas Press, 1999, 84.
- ¹¹ Ibid, 42.
- ¹² Ibid, xi.
- ¹³ Ibid, 60.
- ¹⁴ Ibid, 84.
- ¹⁵ Ibid, xiv.
- ¹⁶ Ibid, 84.
- ¹⁷ Ibid, 47.
- ¹⁸ Okakura, Kakuzo. The Book of Tea. ed. Everett F. Bleiler. Dover Publications, Inc. (1964): 15, 1.
- ¹⁹ Locher, Mira. Zen Gardens: The Complete Works of Shunmyo Masuno, Japan's Leading Garden Designer. Tuttle Publishing, 2013, 21.
- ²⁰ Okakura, Kakuzo. The Book of Tea. ed. Everett F. Bleiler. Dover Publications, Inc. (1964): 15, 19.
- ²¹ Ibid, 33.
- ²² Ibid, 34.
- ²³ Ibid, 40.
- ²⁴ Cline, Ann. A Hut of One's Own: Life Outside the Circle of Architecture. Vol. 17. Cambridge, MA: MIT Press, 1997, 27.
- ²⁵ Locher, Mira. Zen Gardens: The Complete Works of Shunmyo Masuno, Japan's Leading Garden Designer. Tuttle Publishing, 2013, 18
- ²⁶ Okakura, Kakuzo. The Book of Tea. ed. Everett F. Bleiler. Dover Publications, Inc. (1964): 15, 34.
- ²⁷ John Johnson (Pastor) in discussion with the author, February 2015.
- ²⁸ Ed Catmull (Co-founder of Pixar Animation Studios and president of Walt Disney Animation Studios) in discussion with Bill Hybels at the Willow Creek Leadership Summit, August 2015.
- ²⁹ "Outside the Pale": The Architecture of Fay Jones. University of Arkansas Press, 1999, 47.
- ³⁰ Bachelard, Gaston. The Poetics of Space. Vol. 330. Beacon Press, 1994, 183.

FIGURES

Figure 1. Concrete yard across from hotel. Photographs by Author

Figure 2. Intersection of Jackson Blvd. and La Salle St. Photograph by Author

Figure 3. Trellis superstructure. Photographs by author

Figure 4. Scale relation and city presencing. Image by author

Figure 5. Millennium Park boardwalk. Photographs by Author

Figure 6. Photographs of Thorncrown Chapel. Photographs by Daniel Terdiman, CNET

Figure 7. Left; Photograph of glass-stone connection. Photograph by Daniel Terdiman, CNET. Right; Relation of interior and exterior. Image by author

Figure 8. Left; Scale relation to exterior. Image by author. Middle; Scale relation to interior. Image by author. Right: Photograph of interior. Photograph by Daniel Terdiman, CNET

Figure 9. Left; Section through diagonal members. Image by Author. Right; Diagonal two-by detail representing void. Image by Author

Figure 10. Left; Roji walkway. Photograph by Shunmyo Masuno. Middle; Tea pavilion. Photograph by Shunmyo Masuno. Right; Tea room. Photograph by Shunmyo Masuno

Figure 11. Roji garden walkway at Nassim Park Residences designed by Shunmyo Masuno. Image by Shunmyo Masuno

Figure 12. Enjoying Kuau. Photographs by Author

Addendum

JORDAN ODOR
Miami University

FROM WRITTEN THESIS TO DESIGN AND BEYOND

In the written portion of my thesis, my intent was to establish a groundwork by which I could design based off of certain principles. The process of coming up with these principles was painstaking. With all the research that I had done, I believe I was getting close to but had not yet reached the full understanding of repose that I had hoped for. Thinking about it now, I realize that this concept of repose was potentially more than I could have successfully grasped over the duration of this thesis process. However, I believe that this aspect and quality in design is something that I will continue to understand and learn about as I continue in my architectural journey. I view this thesis as a manifesto-like foundation upon which I would like to continue to build in the future.

REPHRASED THESIS QUESTION AFTER DESIGN PROCESS

In contemporary society, how can architecture provide moments of repose to relieve an anxious culture?

REPHRASED THESIS INTENT AFTER DESIGN PROCESS

An architecture of repose acts as a venue for the moments (events and environments) that can affect one's life and well-being. Spaces of repose provide relief for the passerby or common user while allowing that person to stop and step back from their typical daily situation. This 'stepping back' allows that individual to pause and reconsider their situation while living in a moment of peace.

DESIGN PROCESS TECHNIQUES

During the design process, I translated my three initial ideals of simplicity, emptiness and harmony into some techniques that were easier for me to grasp.

Transition

The idea of transition was extremely important in my end design. In the transition from here to there, an individual would pass through a gateway or portal to signify a change in environment and also to mentally assert a mental break from whatever the individual was dealing with before. I viewed these ideas of transition and gateway similar to the concepts found in the roji.

Layering of Views

Similar to the idea of the gateway, I desired to make viewports that framed and layered different views. This layering of space is something that allows the mind to find its own place. This provides the opportunity for an individual's imagination to roam. This was achieved through variations in levels of spatiality and visual transparency

Material Expression

This technique relates back to ideas of harmony and simplicity. The materials used in my project all relate back to natural environments. They are simple and natural materials that are not largely manufactured or altered. Because of this, I used a simple palette consisting of board-formed concrete, stone, wood, glass, and steel.

Stimulation

This technique is about creating an environment for the senses. My thought was that a stimulating experience that is in contrast to one's typical daily routine could distract an individual from their worries in order to bring them to a moment of repose. These 'distractions' could be the sound of running water, the reflection (echo) of sound, the warmth of a fireplace, unusual lighting qualities, or even the sound of music.

CONCLUSION

Throughout this entire thesis process, I can clearly see how I have matured both in my thought processes and also in my design quality and depth. I have never had the opportunity to dedicate so much time to one unified project. I am thankful to Miami's thesis process for the opportunity to explore my own passions and to do so with the greatest of support. I am relieved to be finishing up my schooling but at the same time I know that I will miss my time with my teachers and friends. I will always cherish my memories of the past six years here at Miami University.

THANKS

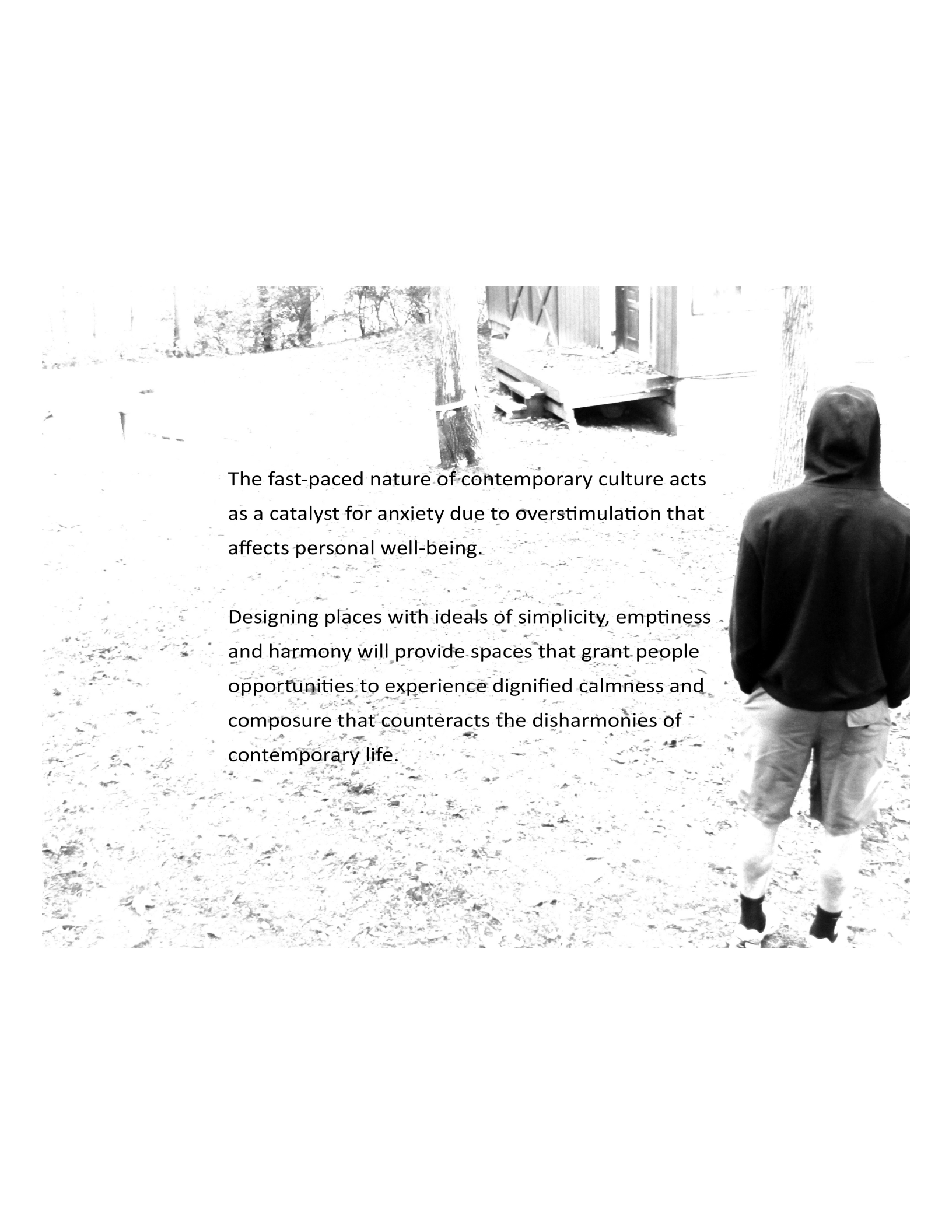
There are many people that I would like to thank for their continued support throughout this entire process. I would like to thank my family, especially my mother Marcia and my Father Kent. I would like thank my thesis colleagues for their friendship and comradery. I would especially like to thank Todd Yoby for his daily support and discussion as my desk neighbor. I am thankful to the man Mr. Milton Green for being my inspiration and a catalyst for where to go with my design project. Thank you to my thesis committee, Gülen Çevik, Dick Overton and especially to John Reynolds. John, you have been instrumental throughout this entire process. Much of my learning at Miami can be attributed to you. I am thankful to call you not just my teacher but my friend. Thank you Diane Fellows for your wonderful and enthusiastic support at the inception of this thesis. Thank you John Becker for your time and commitment to my ideas and development.

Thank you, thank you, thank you to my beautiful, talented, ever-so-patient wife, Lisa.

I absolutely could not have done this without your continued support and encouragement. I am so thankful for you. In the end I give all credit to my father God in heaven who I believe has guided me, steered me, and sustained me along this path.

Thank you all!

PROCESS

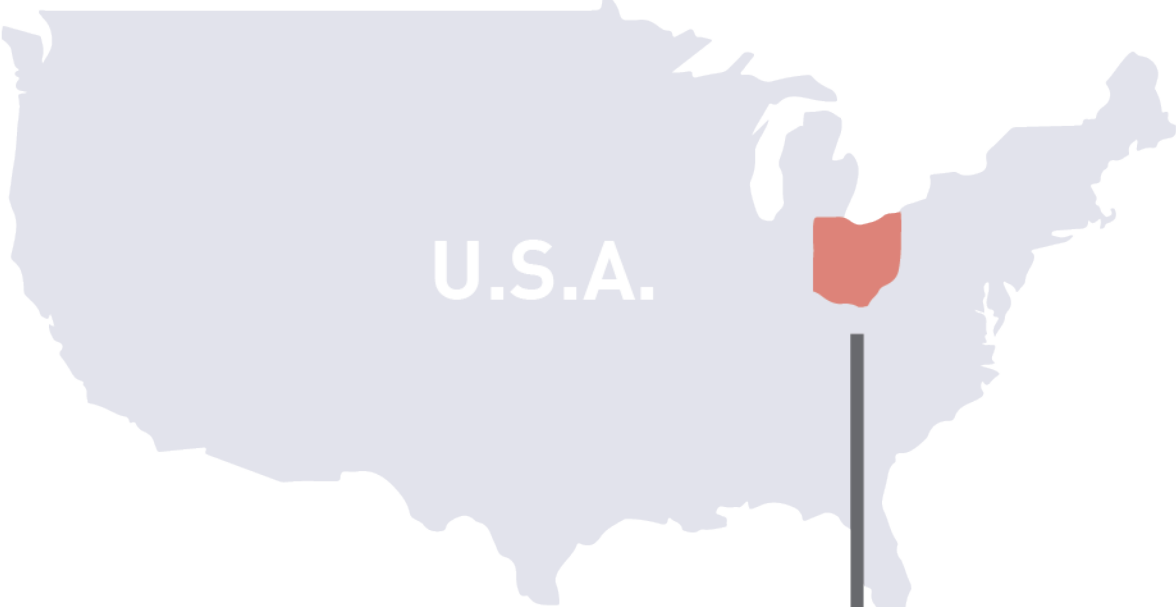
A black and white photograph showing a person from behind, wearing a dark hooded sweatshirt and light-colored shorts, walking away on a dirt path. In the background, there is a simple wooden building with a small porch or platform. The scene is outdoors with trees and a fence visible in the distance.

The fast-paced nature of contemporary culture acts as a catalyst for anxiety due to overstimulation that affects personal well-being.

Designing places with ideals of simplicity, emptiness and harmony will provide spaces that grant people opportunities to experience dignified calmness and composure that counteracts the disharmonies of contemporary life.

SITE LOCATION

Vicinity Maps



CINCINNATI, OH

Over-The-Rhine



SITE CONDITIONS

Photographs

Existing:



Race Street looking East



Race Street looking South

SITE CONDITIONS

Photographs

Existing:



Race Street looking West



Abandoned residential building

Context:



Unused garden space



Liberty Street

Local Revitalization:



Streetcar stop across street



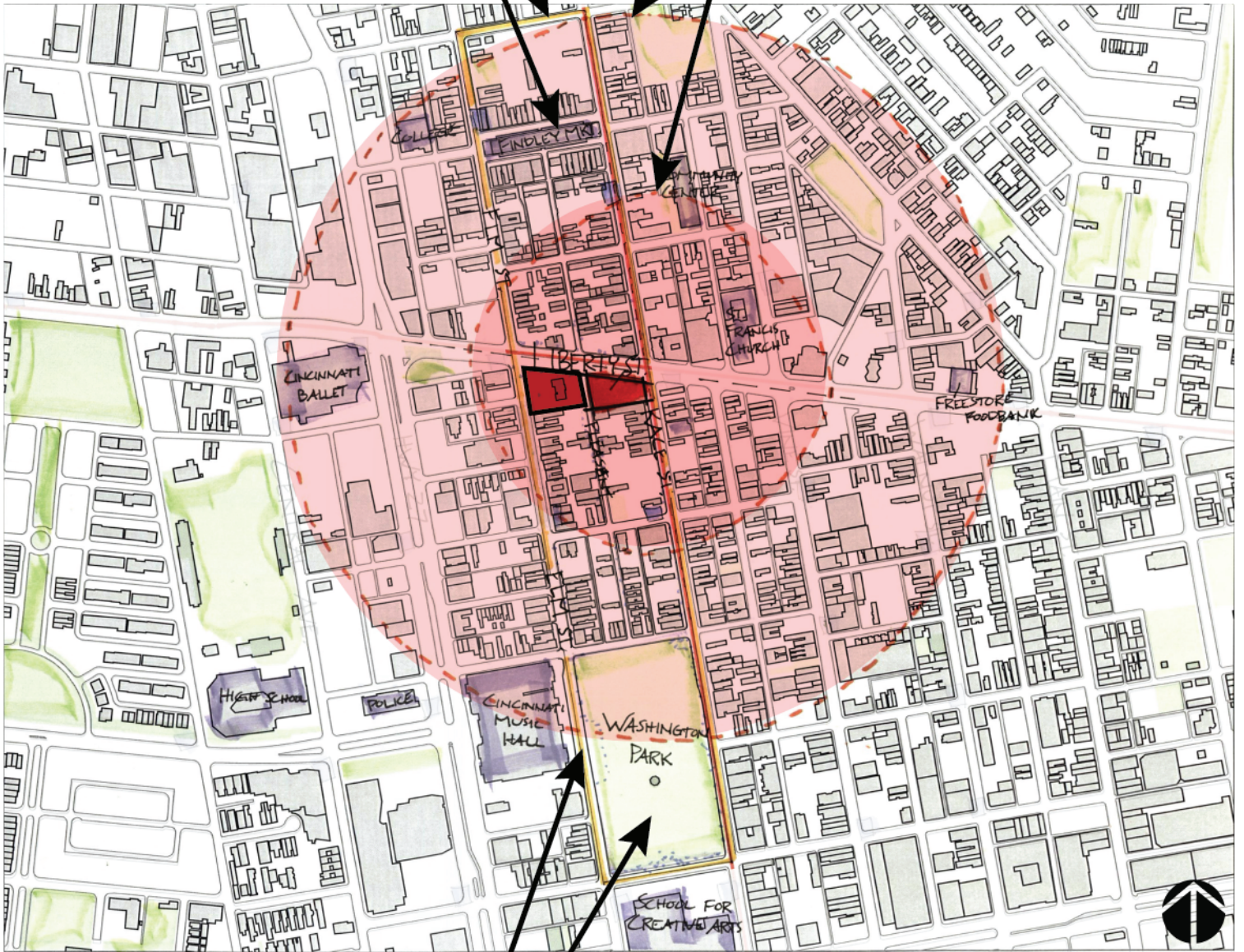
Restored house 1 block south of site

AREA PLAN

Analysis

Streetcar Rail
Findlay Market

1/2 mile walking radius
1/4 mile walking radius



Streetcar Rail
Washington Park

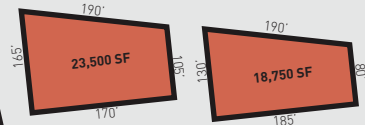
SITE PLAN

Analysis

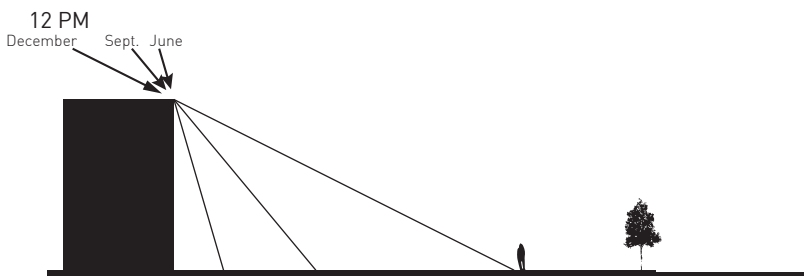
Circulation (Primary Site Force)
 High vehicular traffic along Liberty Street. Introduction of streetcar loop going north and south of site with stops adjacent on Race Street and Elm Street. High pedestrian walking path along length of Pleasant Street between Washington Park and Findlay Market.



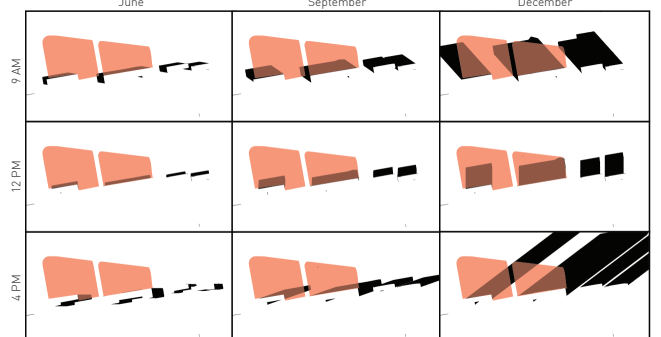
Site Square Footages



Abandoned Bldg.



Shadow Studies



SITE INTENTIONS

Influences and Inspiration

Site #2

I have settled upon site #2 in Over-The-Rhine. My main focus has been what I identify as the primary site. I am now considering the potential sites as extensions of the primary site for the design proposition.

[Primary Site Forces]

Circulation

High pedestrian/vehicular traffic along Liberty St. & introduction of street car

Sunlight

35' brick wall borders south boundary of site(s)

Cultural Situation

Homeless population in the area will be highly influential. Many homeless currently reside in the vicinity. Contrasts with new population and development.



Intent

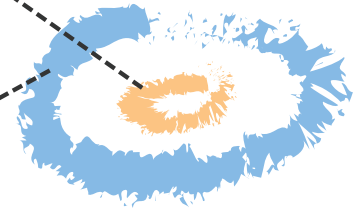
To create a place where people can experience peace. **This does not mean the space has to be solemn and serious.** I want to design for multiple experiences that engage the users. I want to create environments for self reflection as well as communal engagement.

GENERATOR
FUNCTION

People come for the purpose of one thing.

SUSCIPIENT
FUNCTION

They leave with a better state of well-being.



Architectural Proposition

[Primary]

Employment startup center. I want to design a space that dignifies local homeless and jobless individuals who are seeking work. Restoring unfortunate individuals' situations through job training, and employment opportunities.

[Secondary]

Communal space. To create varying experiences that weave throughout the site, especially along the length of Liberty St. This could include:

- A type of **meditative chapel space** for the user or passerby
- Public plaza spaces** to promote personal interaction
- Potential **housing component** for participants of the center

Inspiration

Jeff

I first met him Summer, 2014. I met him again in August, 2015

"I just need a place to go." (To get cleaned up) He currently sleeps under bridge and gets dirty from exhaust
"unemployment is my problem."

Milton (Mr.) Green

I met him in August, 2015. He calls me frequently asking how I'm doing. He is willing and capable of working but does not have an outlet to do so.

"I want to work."

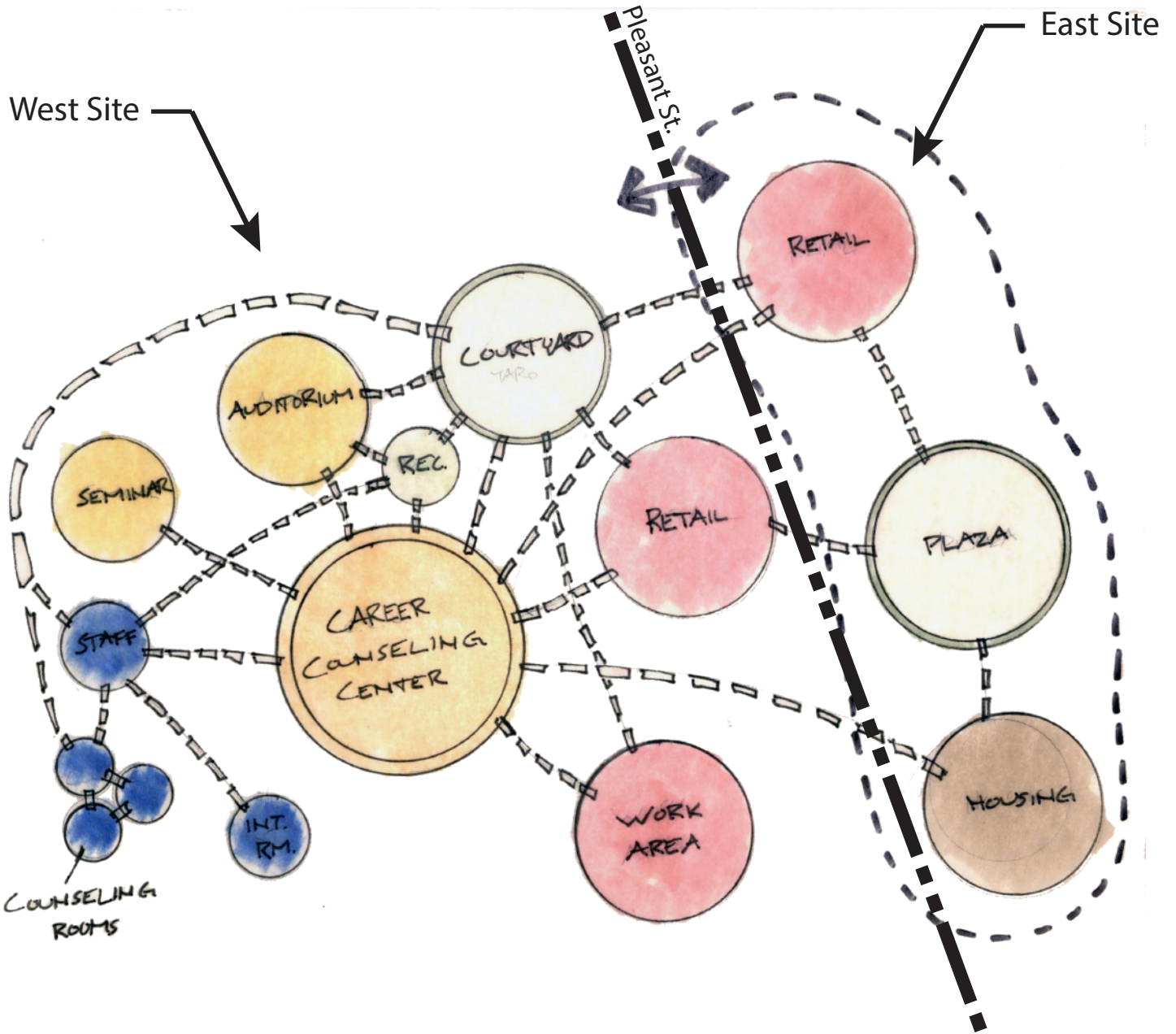
He explained that he is having trouble getting started because he lacks many essentials (address, clean clothes, shower)



Mr. Green and I.
August, 2015.

SITE INTENTIONS

PROGRAM - BUBBLE DIAGRAM



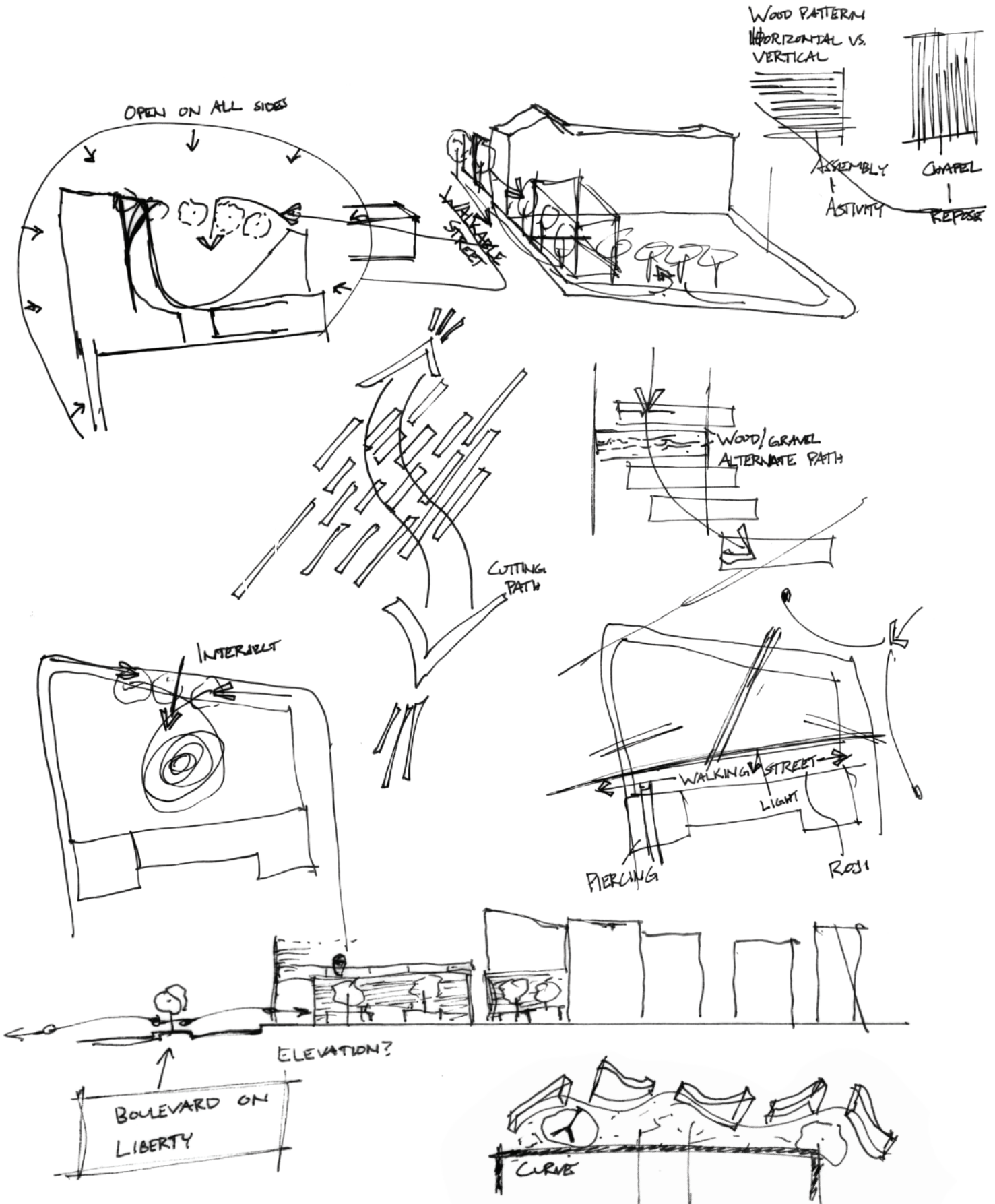
SKETCHES

Site Sketch



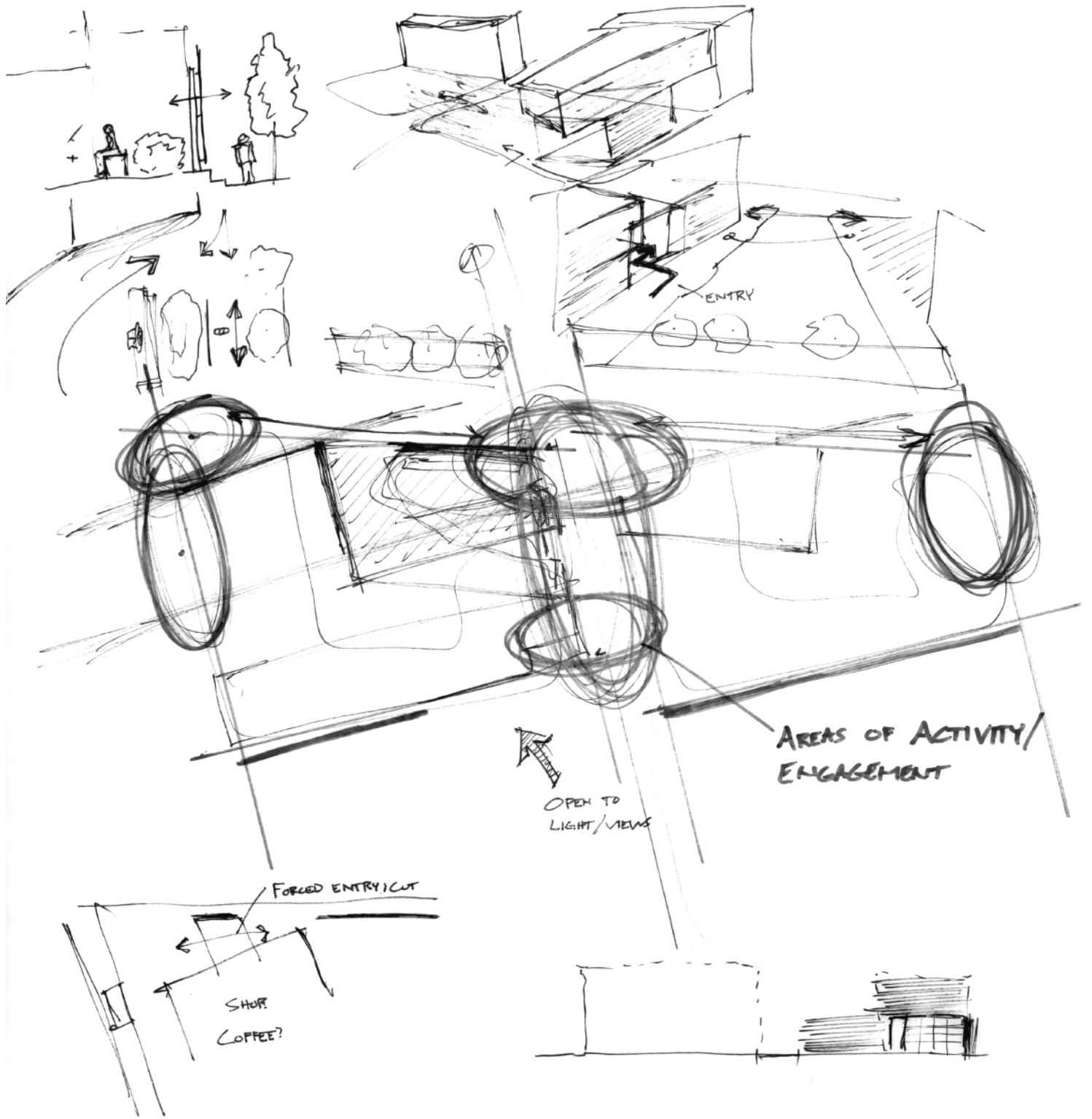
SKETCHES

Initial Site Reactions



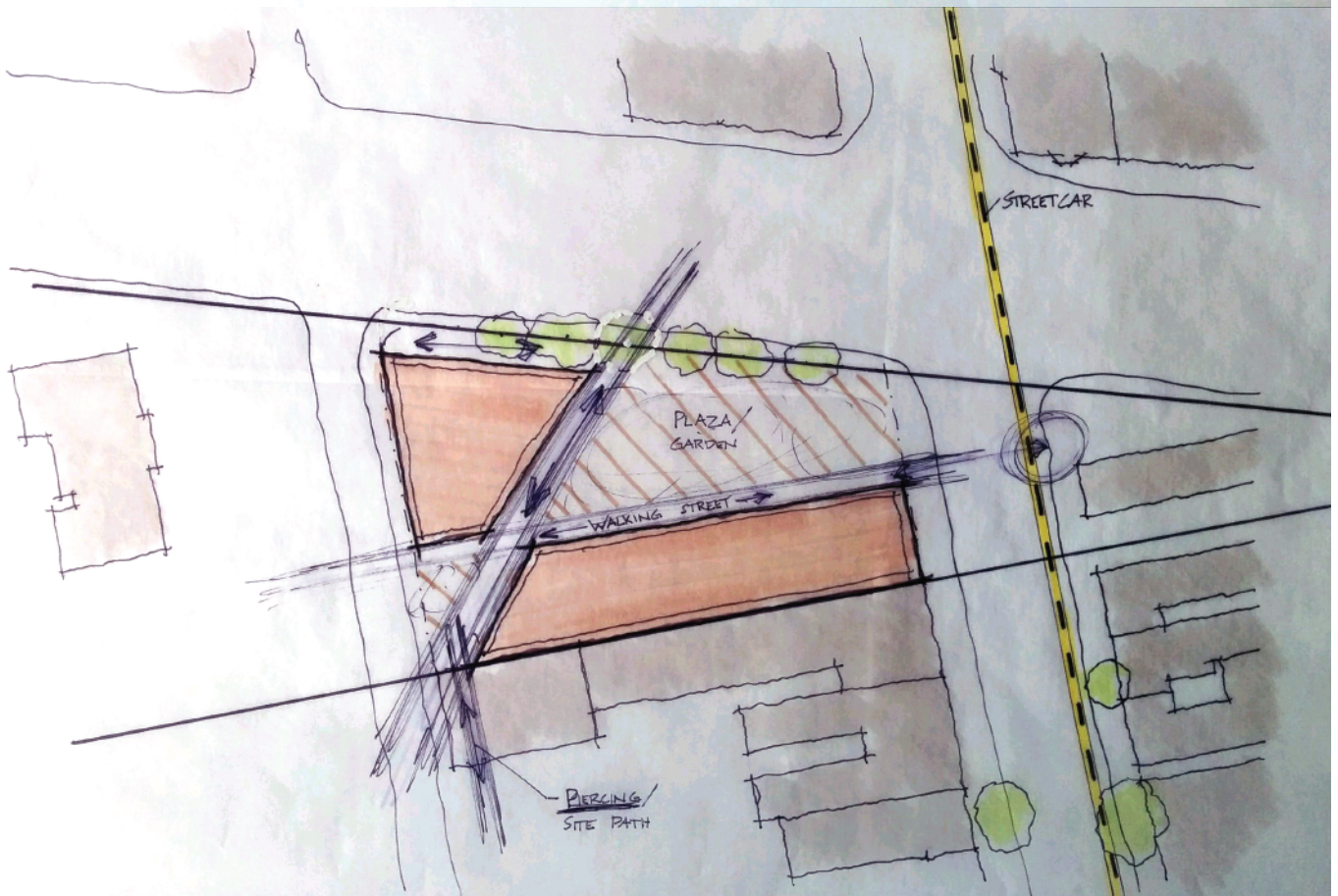
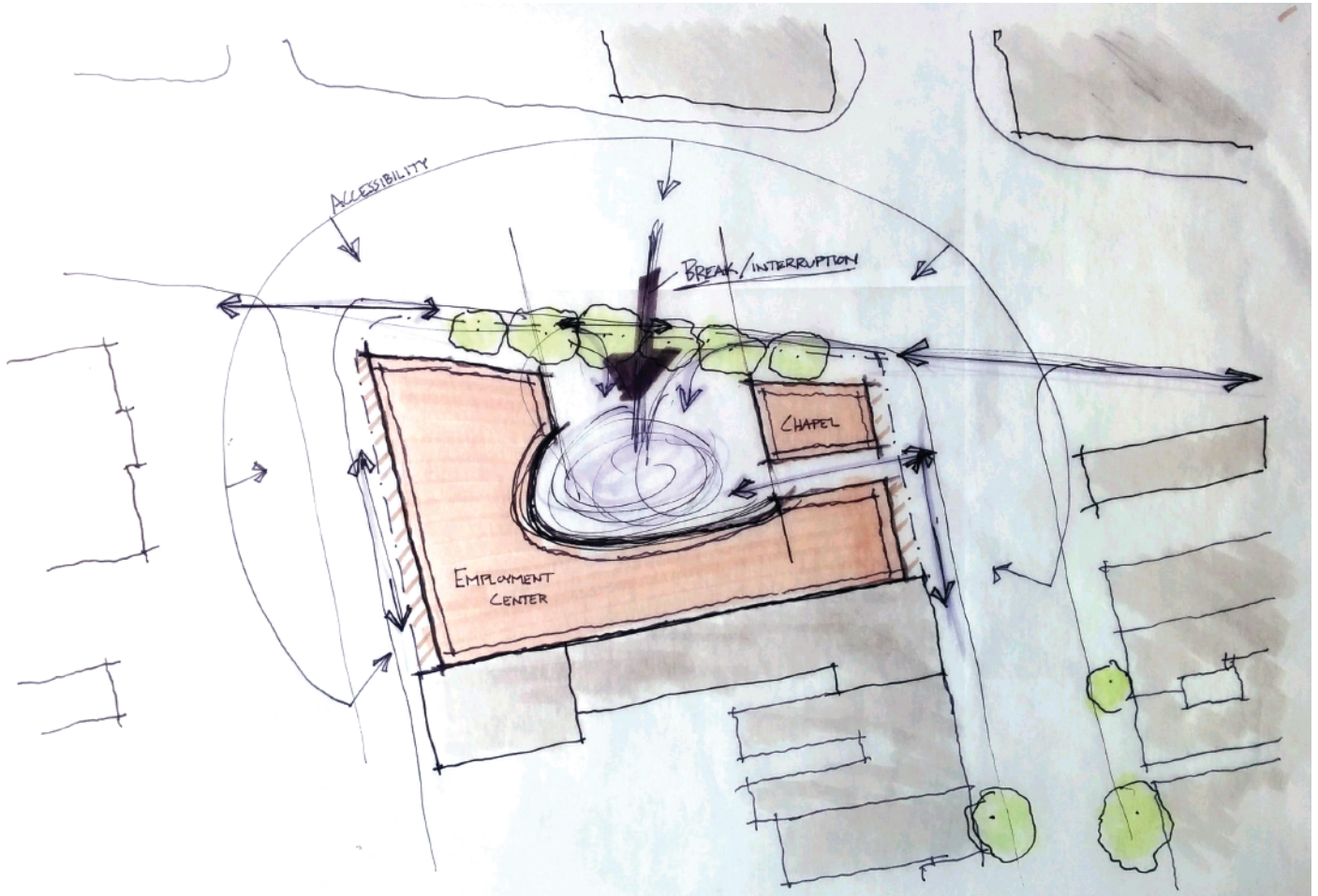
SKETCHES

Initial Site Reactions



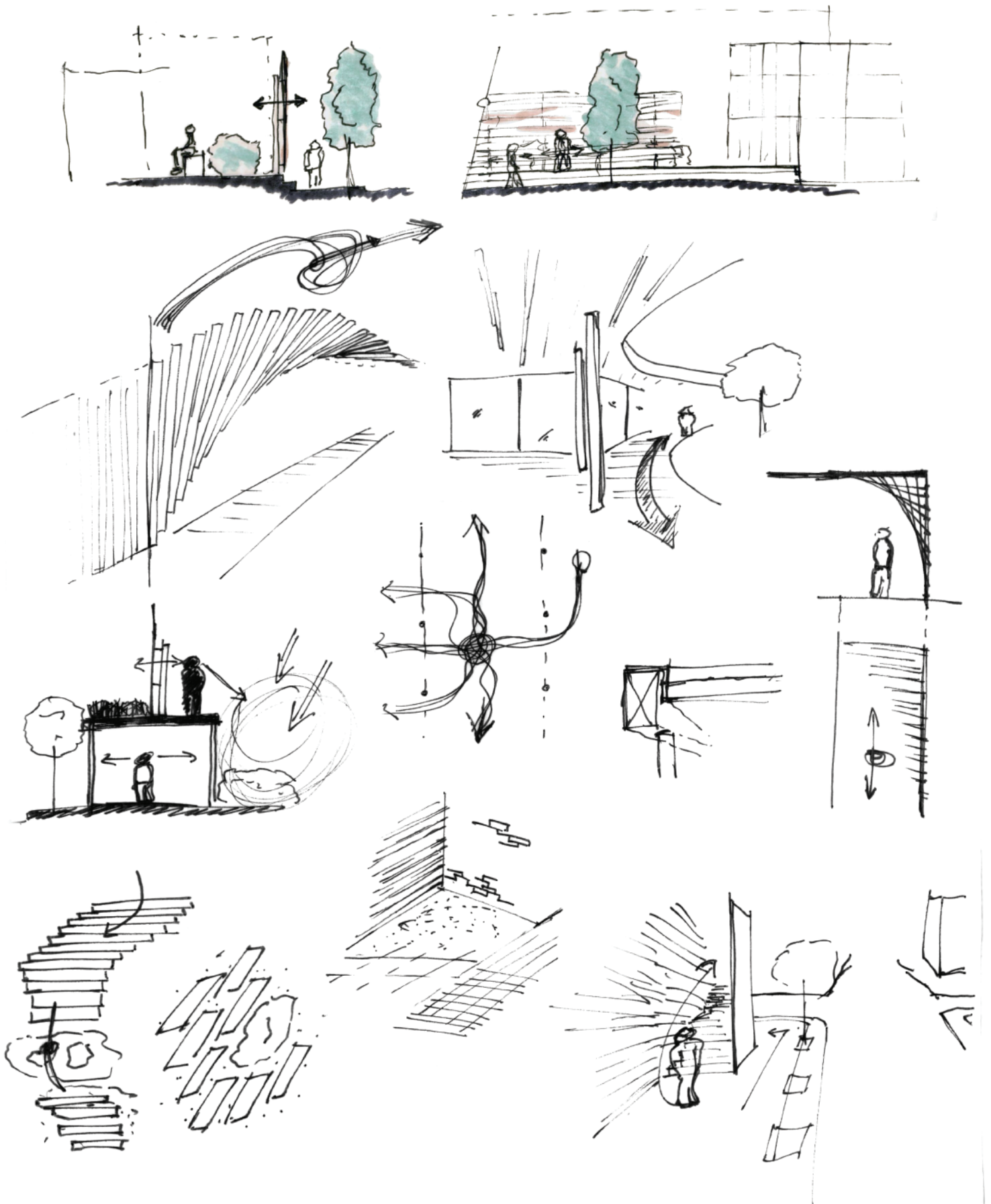
SKETCHES

Initial Concept Schemes



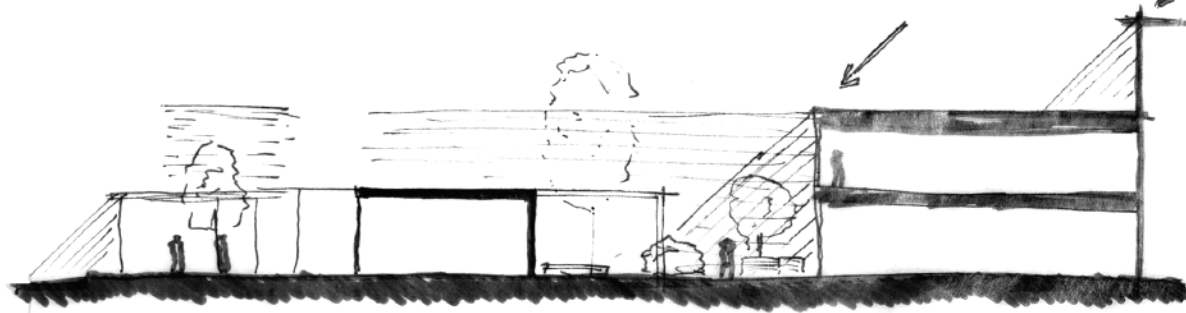
SKETCHES

Site Ideas

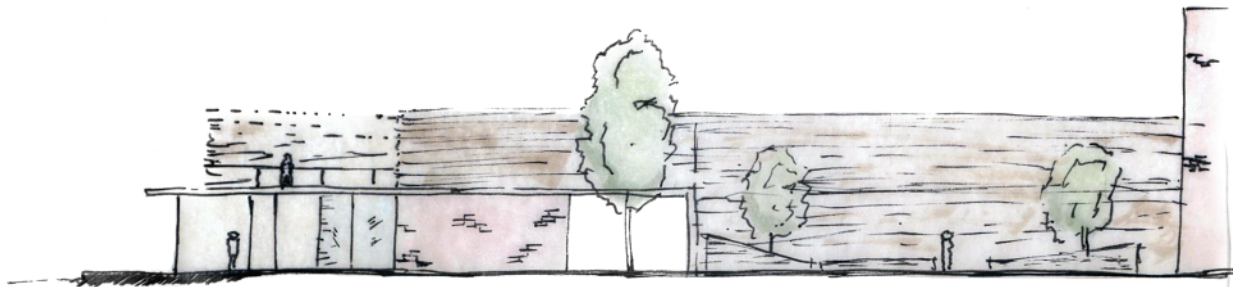


INITIAL DESIGN

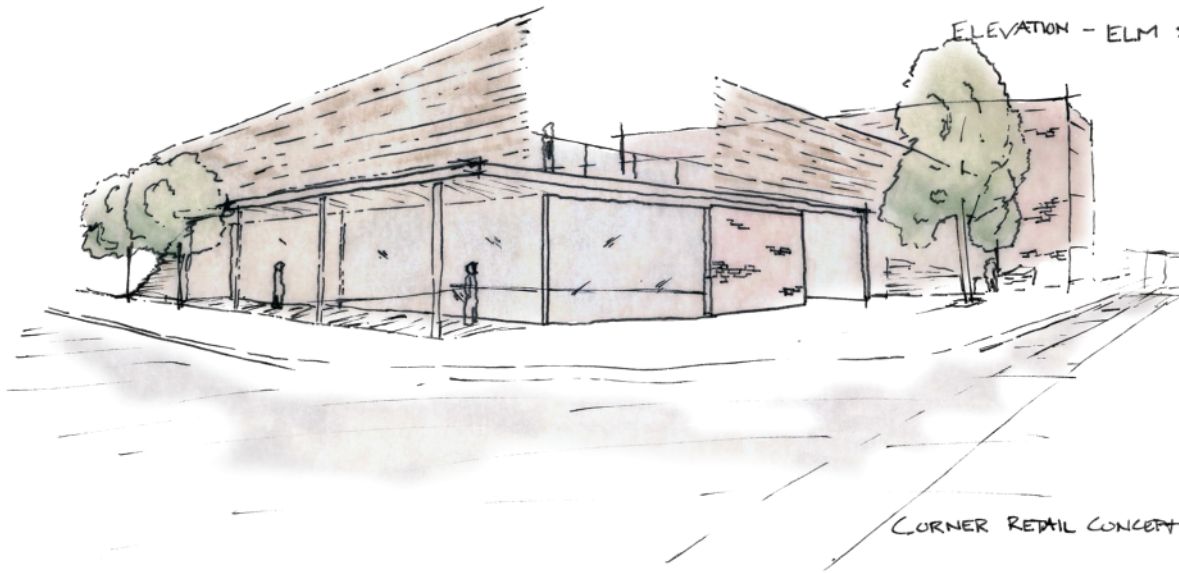
Scheme A



SECTION FROM PLEASANT



ELEVATION - ELM ST.



CORNER RETAIL CONCEPT

POSTER

Soirre and Symposium Poster

Architecture of Repose.

The fast-paced nature of contemporary culture acts as a catalyst for anxiety due to overstimulation that affects personal well-being.

Designing places with ideals of simplicity, emptiness and harmony will provide spaces that grant people opportunities to experience dignified calmness and composure that counteracts the disharmonies of contemporary life.

Cincinnati, Ohio

Site #2, Over-The-Rhine
Southwest corner of Liberty St. and Race St.

Creating place for retreat and intimacy.

Initially I asked, "How can architecture relieve us from the disharmonies of contemporary life?"

My Conclusions

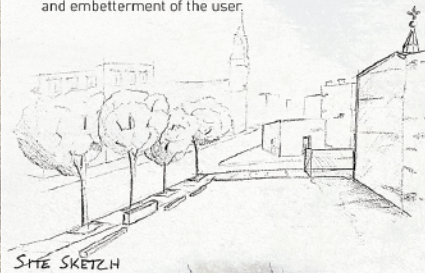
We need a balance of integration within natural and man-made landscapes.

An architecture of retreat should leave emptiness for the mind's contemplation.

An architecture of repose should be simple rather than plain, complex rather than complicated.

Moving Forward

I have selected a site for the continued exploration of my design question. I plan to transform it into a place for communal gathering as well as individual repose. My goal is to design an experience for the well-being and embetterment of the user.



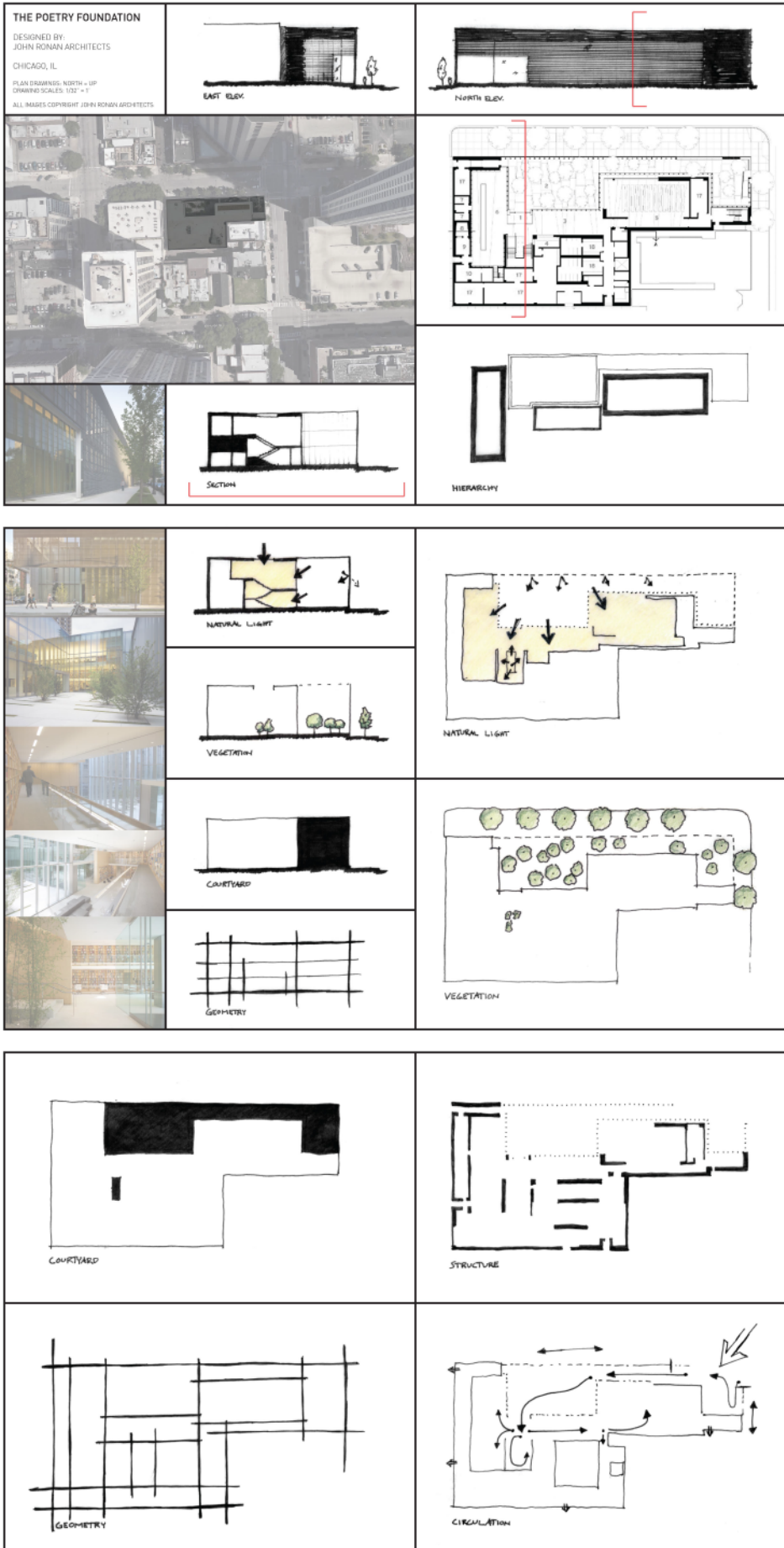
PAPER PRESENTATION

Symposium Presentation



CASE STUDY

The Poetry Foundation



CONCEPT DEVELOPMENT

Interviews and Material Boards

POWER INSPIRES PROGRESS (PIP) pip-cincy.com

NON-PROFIT → OPERATES SMALL BUSINESSES IN CINCY URBAN CORE
 "To provide pre-employment training opportunities for individuals with chronic barriers to employment."

RESTAURANT FUNCTIONS AS "LEARNING LABS/CLASSROOMS"

↓
VENICE ON VINE

MON - SAT 1301 VINE ST. "Job-training program"
 Cincinnati, OH 45202

PIZZA, HUGGIES, PASTA, BREAD, SALAD, SOUP, DRINKS
 - PAID TRAINING IN SUPPORTIVE WORK ENVIRONMENT
 - EMPOWERS TRAINEES TO FURTHER THEIR EDUCATION

- M. SHANNON, Executive Director
 mshannon@powerinspiresprogress.com
- LAUREN ROBERTS, Coordinator of Program Services/Job Dev./Americorps member
 lroberts@powerinspiresprogress.com

OVER THE RHINE COMMUNITY HOUSING (OTRCH).org

NON-PROFIT → COMMUNITY DEV ORGANIZATION
 Provides affordable and supportive housing options w/ life-changing programs to help low-income residents succeed.

MULTIPLE PROPERTIES & PROJECTS

↓
BUDDY'S PLACE (SUPPORTIVE HOUSING)

PERMANENT SUPPORTIVE HOUSING FOR MEN + WOMEN
 20 UNITS
 CASE MANAGER
 ↳ WORKS WITH 20 ON EMPLOYMENT, TREATMENT, MEDICAL CARE, EDUCATION AND REFERRAL SERVICES.

JIMMY HEATH HOUSE (SUPPORTIVE HOUSING) 219 ODEON ST.

25 UNITS, 24 HR DESK, COMMUNITY ROOM, COURTYARD FOR RESIDENT USE.
 3 STORIES

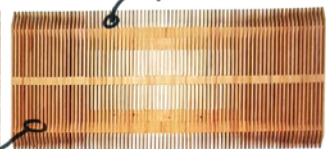
→ MARY BURKE RIVERS, Executive Director
 513-381-1171 ext. 111

→ DAVE ELKINS, Jimmy Heath House
 381-0008

→ ANDY HUTZEL, Director of Housing Services
 381-1171 ext. 112



MATERIAL BOARD

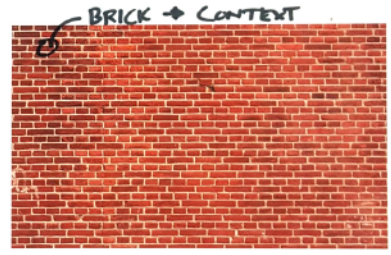


WOOD SLATS

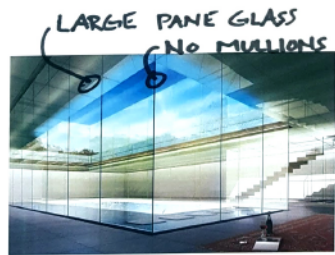
TRANSPARENCY, ACOUSTICS



BOARD-FORMED CONCRETE



BRICK → CONTEXT



LARGE PANE GLASS NO MULLIONS



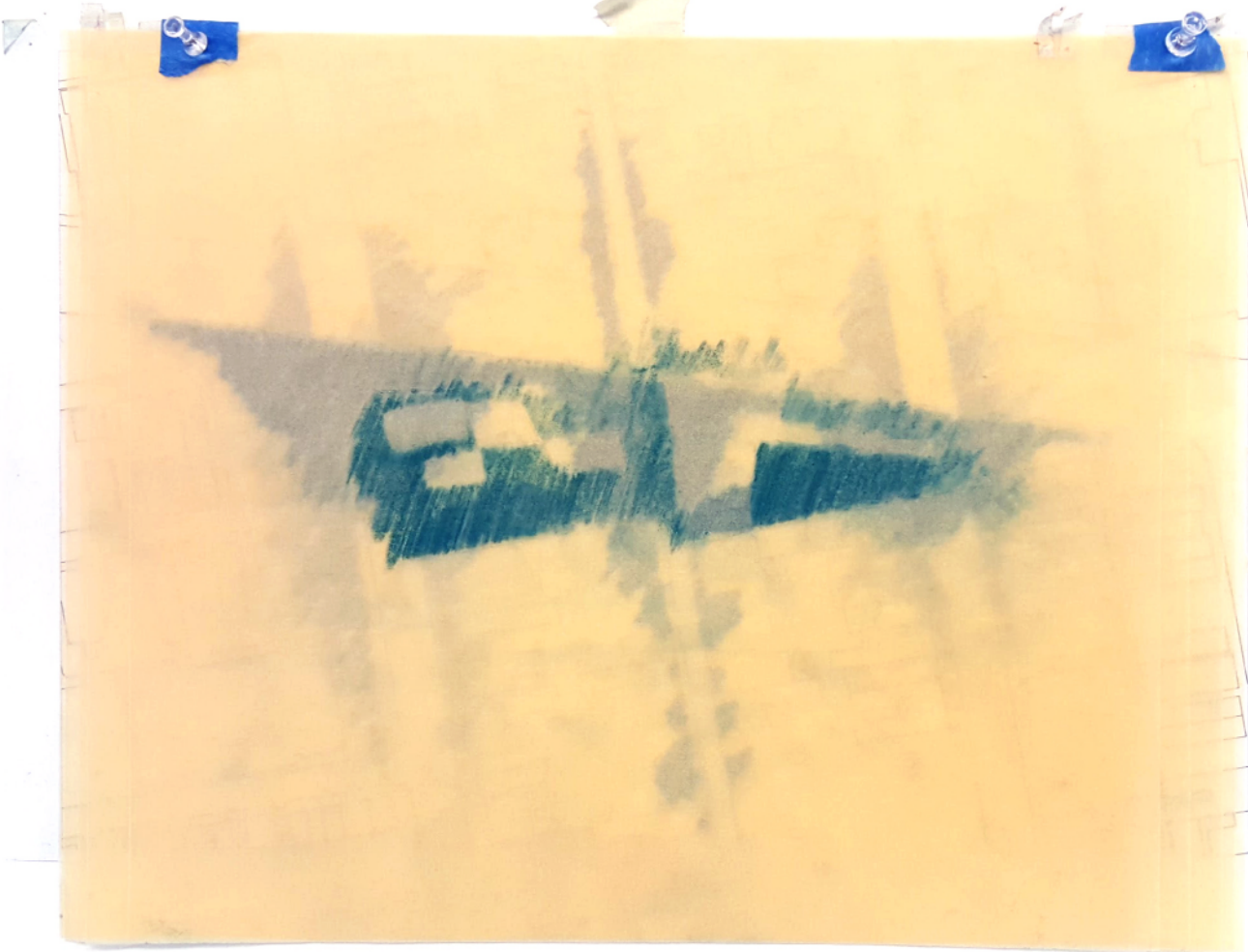
SMALLER ROOM, VIEWPORT TO COURTYARD



OPAQUE GLASS

CONCEPT DEVELOPMENT

Pastel Drawings - Transparency



1/64"
1'-0"

CONCEPT DEVELOPMENT

Site Parti



FALL SEMESTER PIN-UP

Scheme B - Axonometric and Site Plan Views

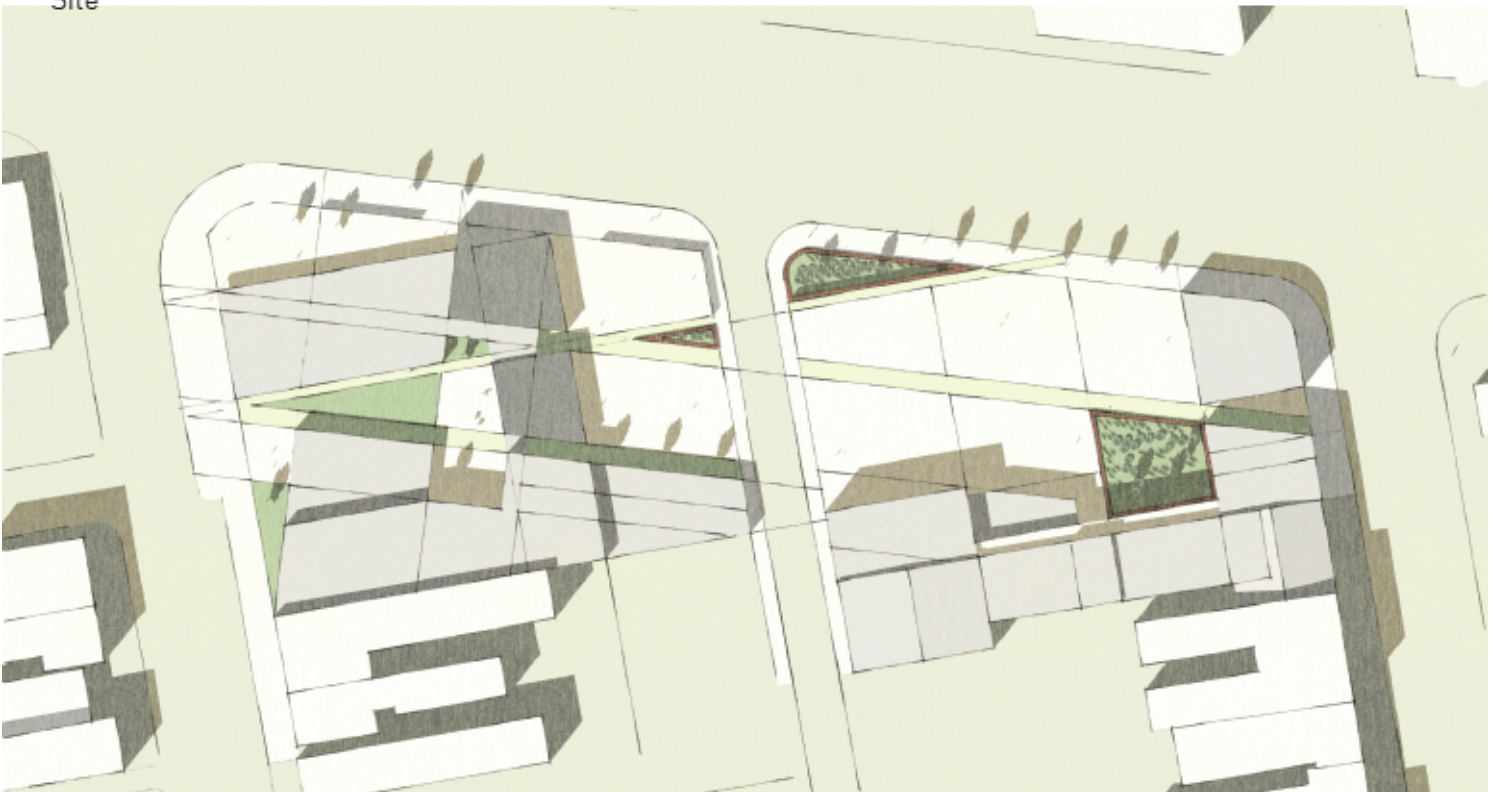
View

Site Axonometric



View

Site



FALL SEMESTER PIN-UP

Scheme B - Perspective Views

View

Aerial - Race Street Corner



View

Aerial - Elm Street Corner



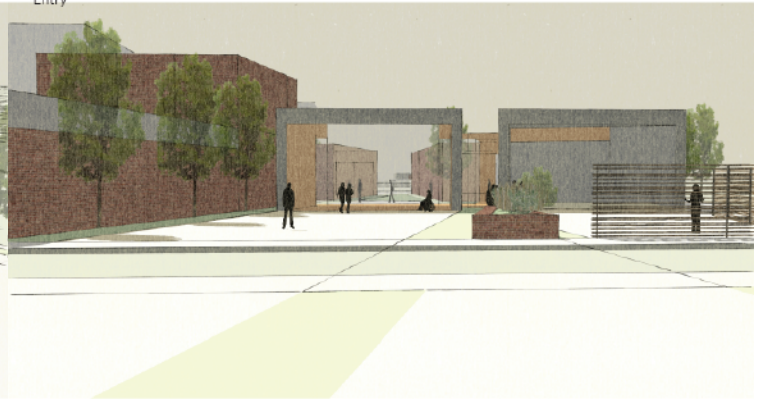
View

Plaza From Residential Walkway



View

Entry



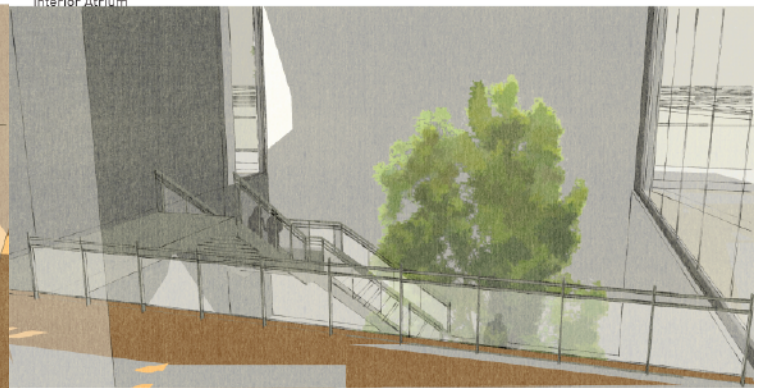
View

Courtyard from Second Floor



View

Interior Atrium



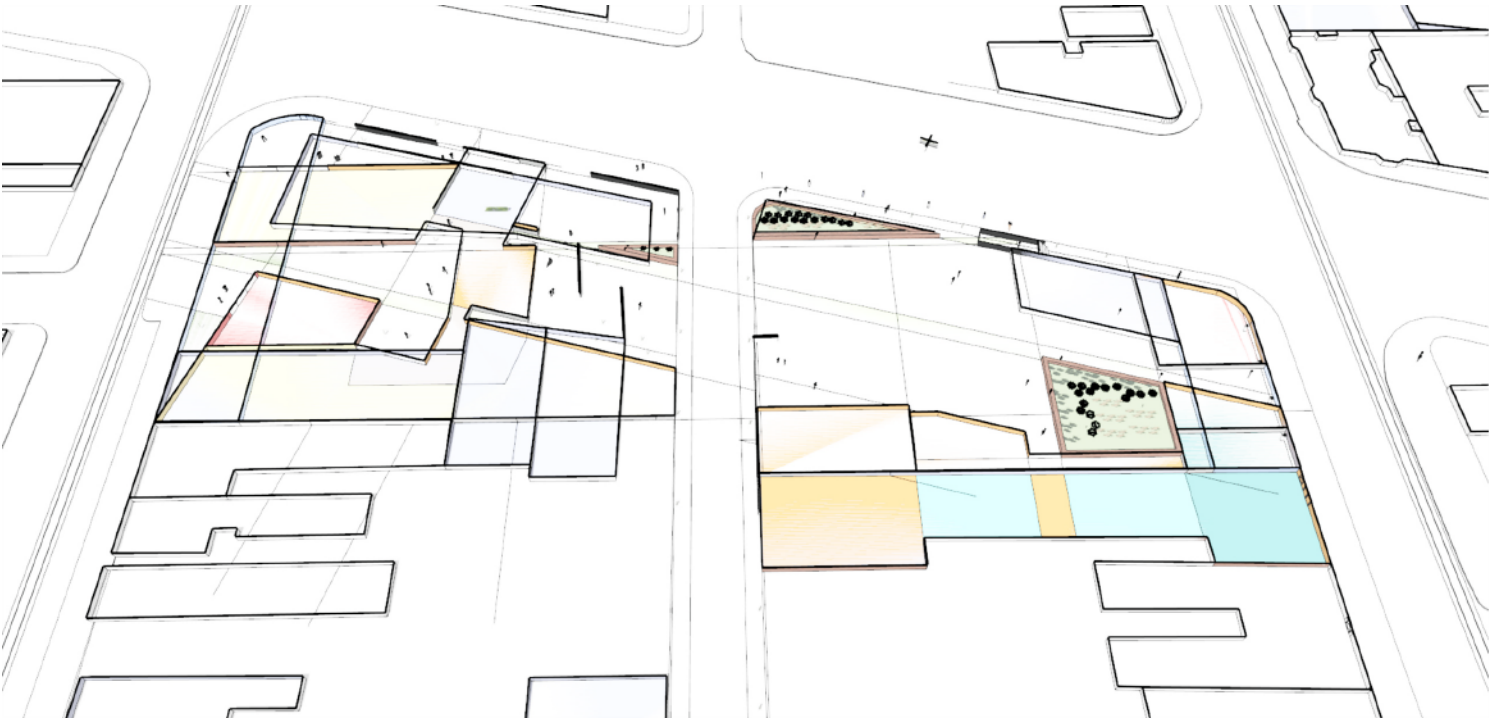
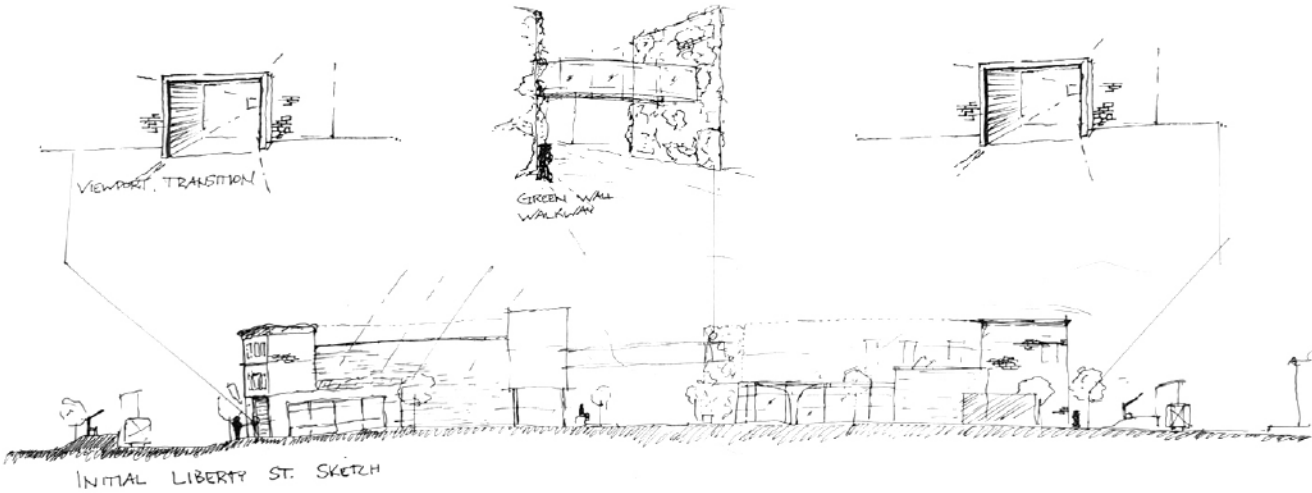
CONCEPT DEVELOPMENT

Site Partis



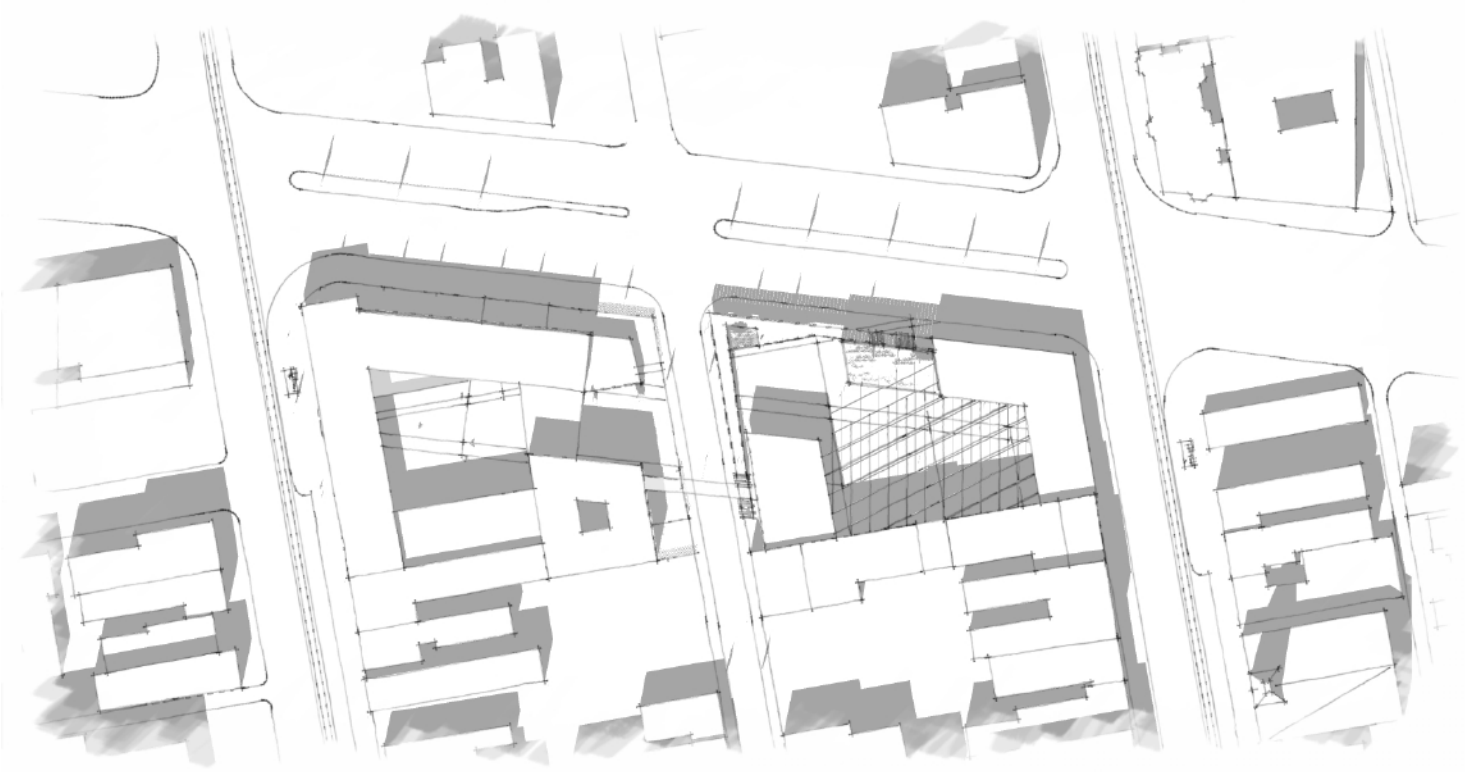
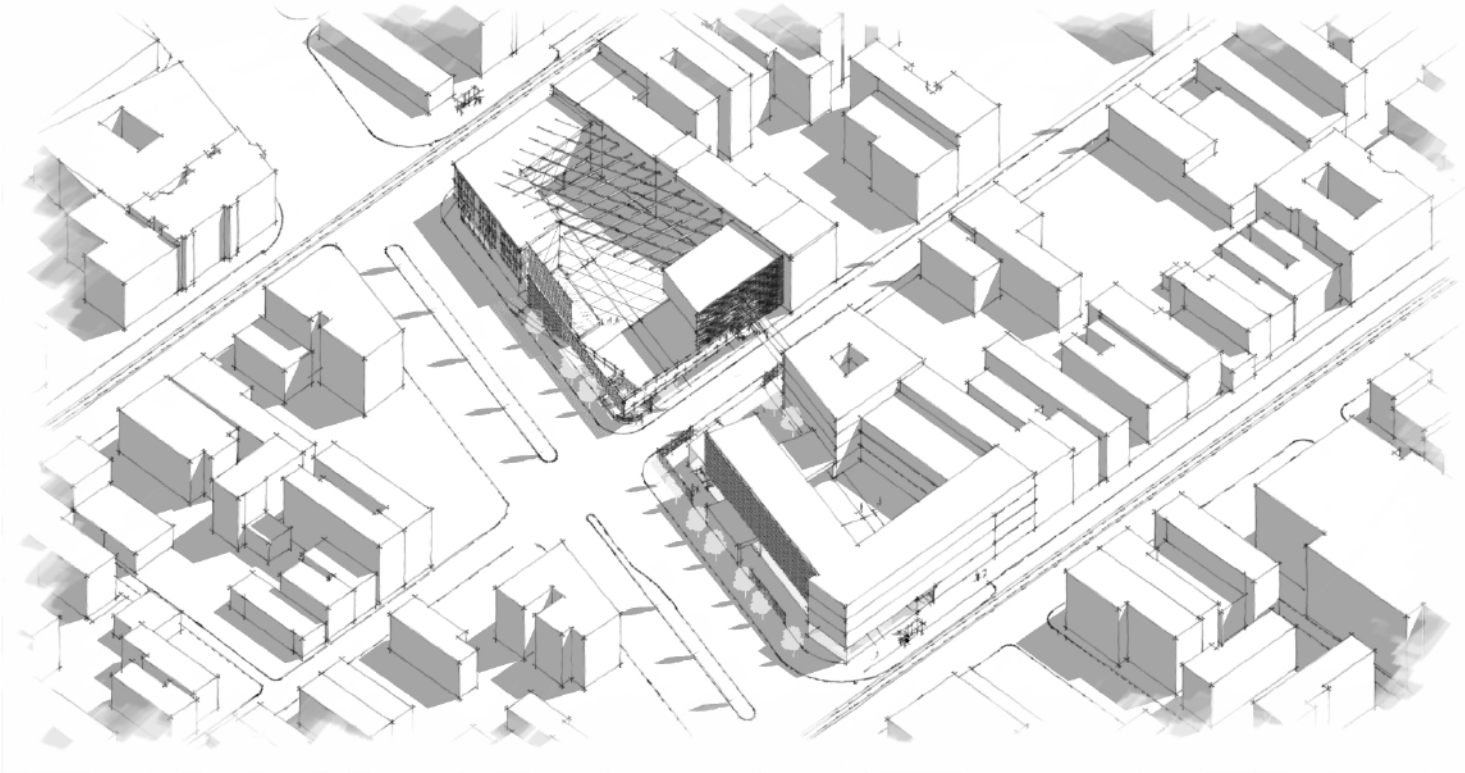
SITE PROGRESS

Sketches and Overlaying



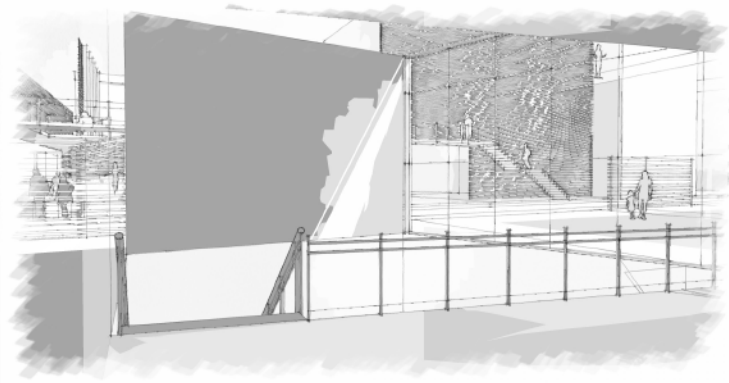
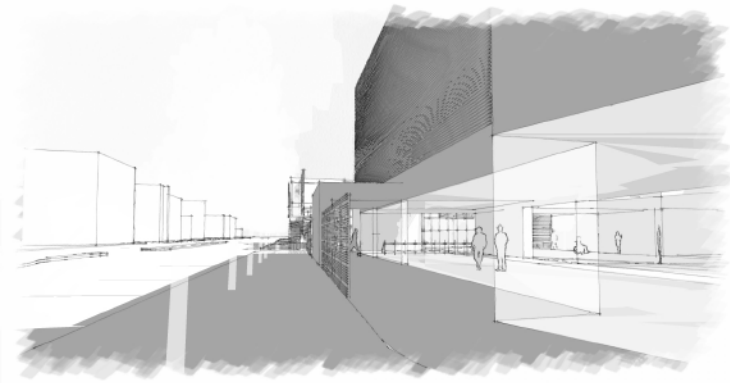
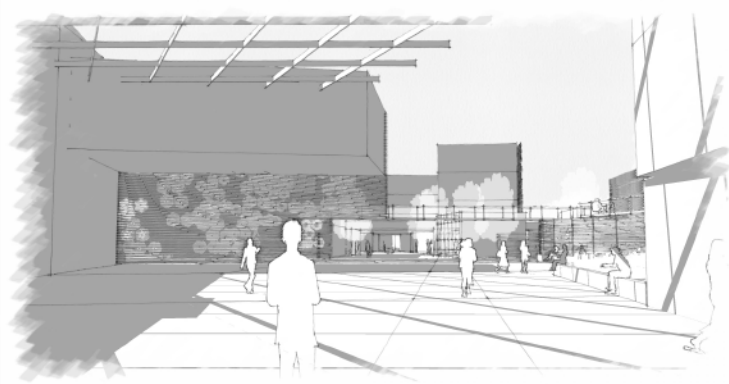
SPRING PIN-UP

Scheme C - Axonometric and Site Plan Views



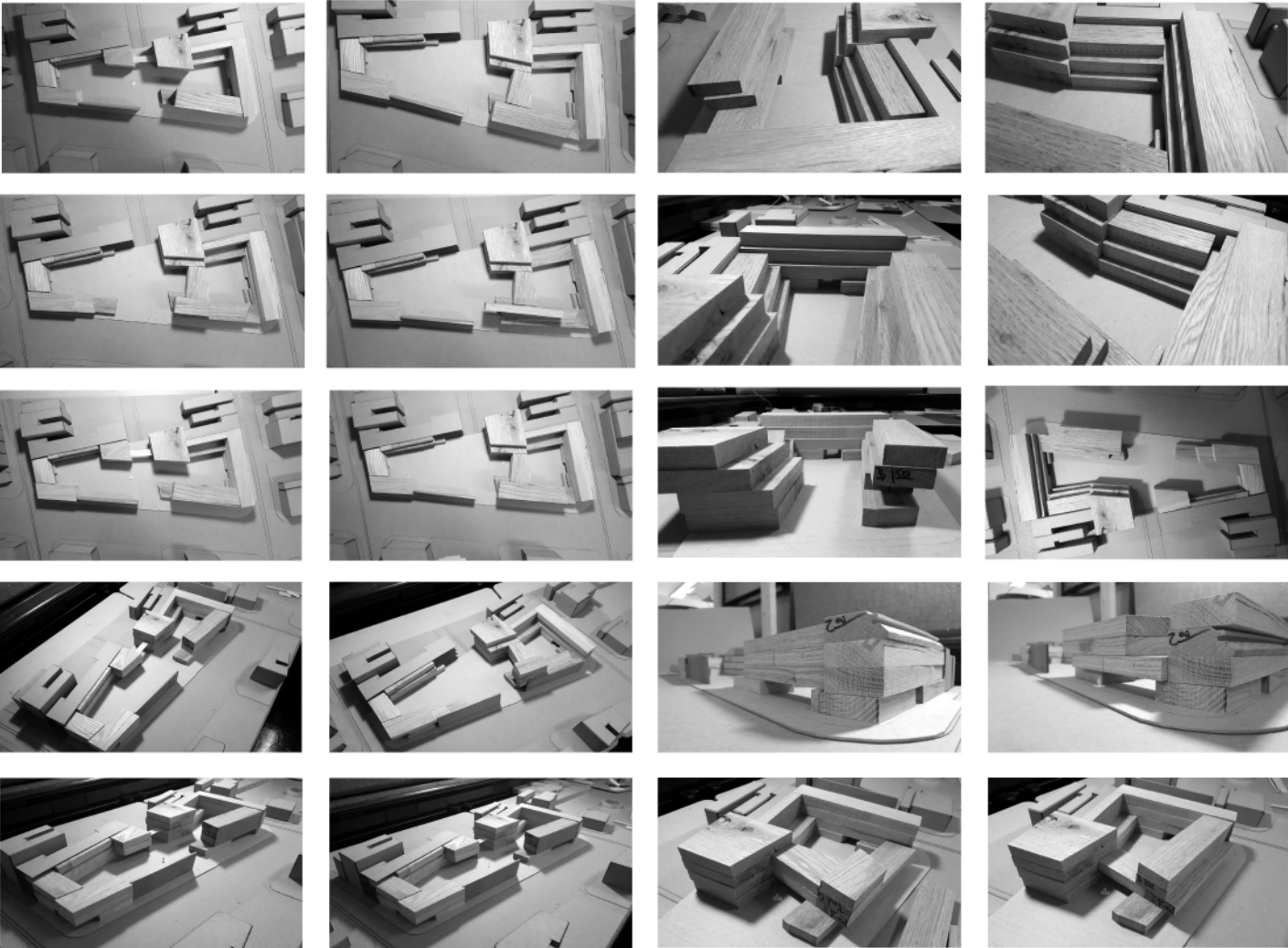
SPRING PIN-UP

Scheme C - Perspective Views



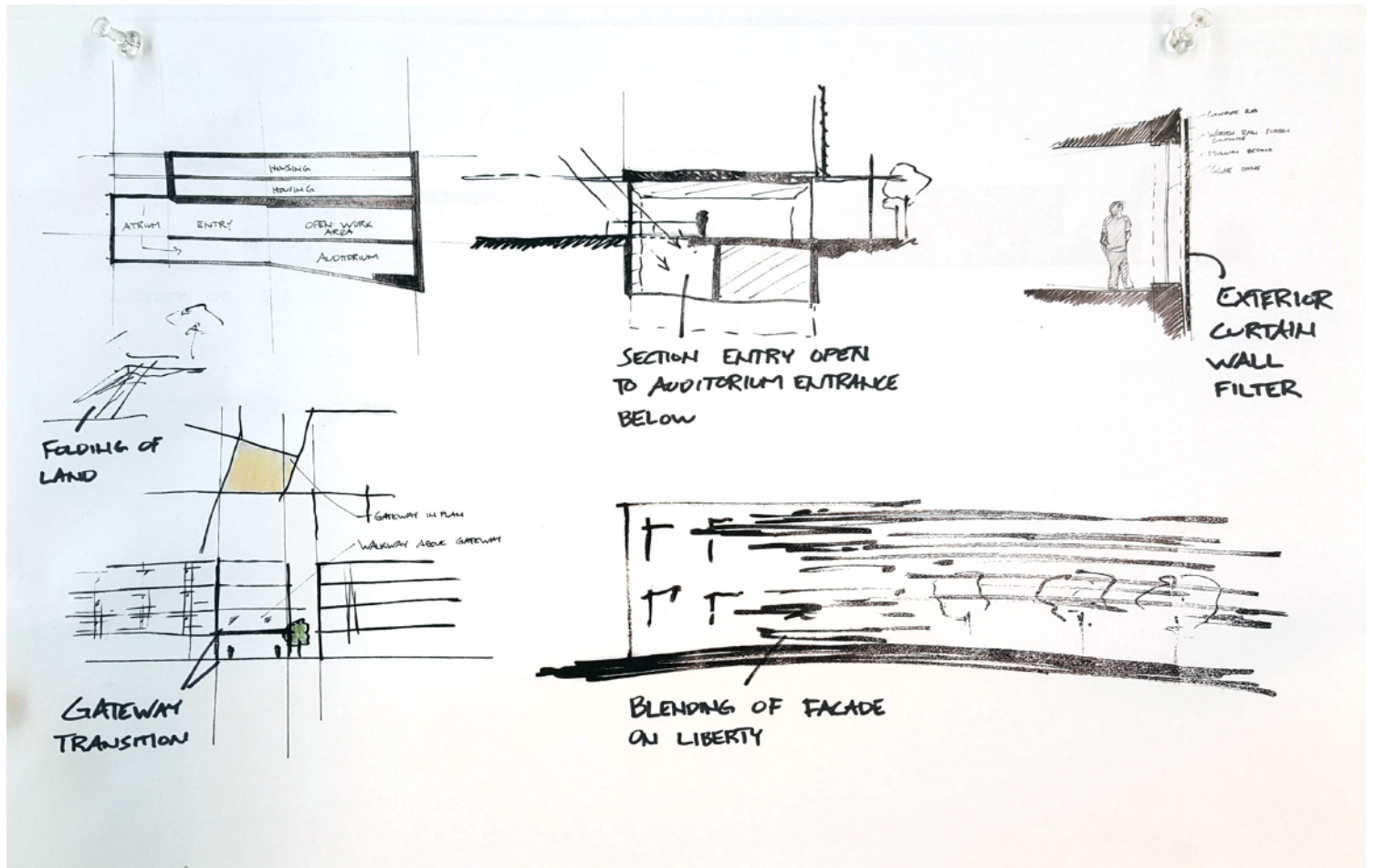
SITE DEVELOPMENT

Site Model Images



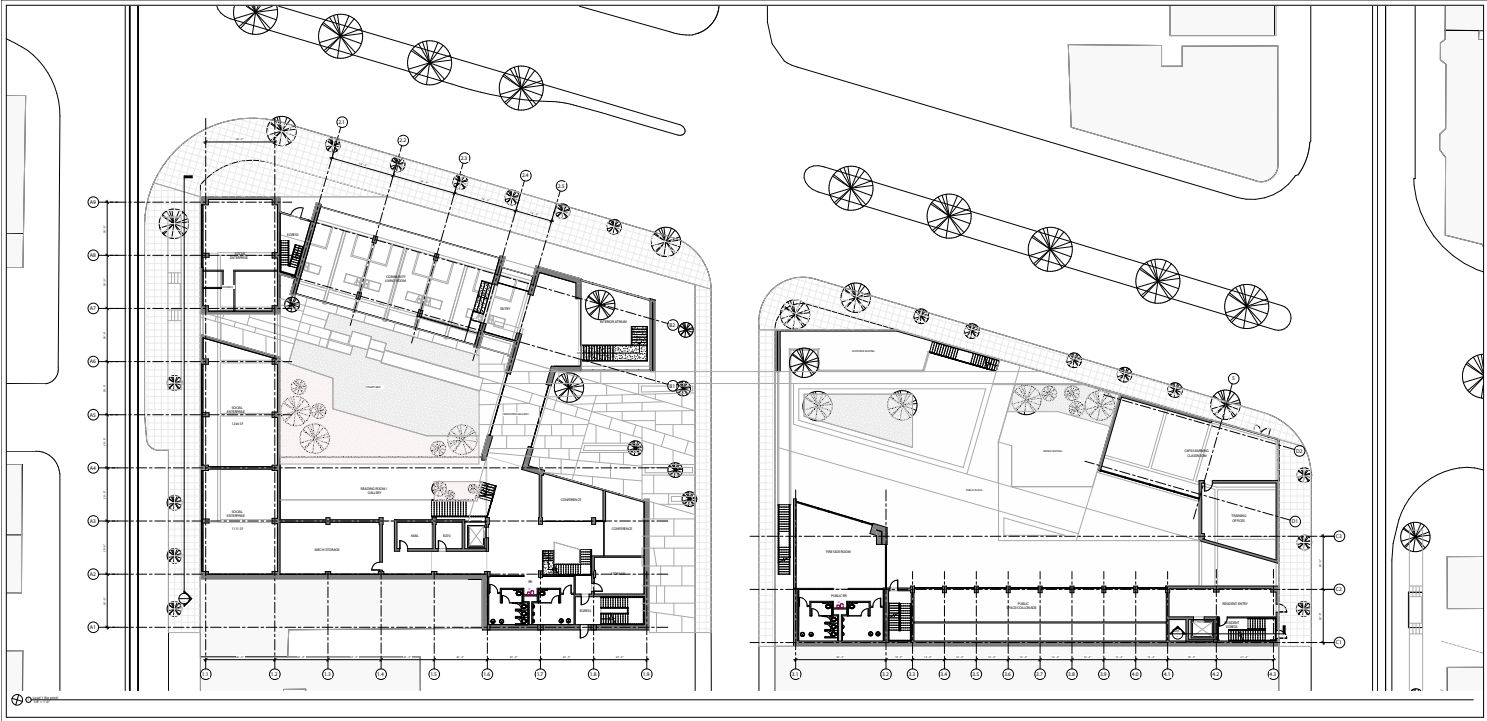
SKETCHES

Site Progress



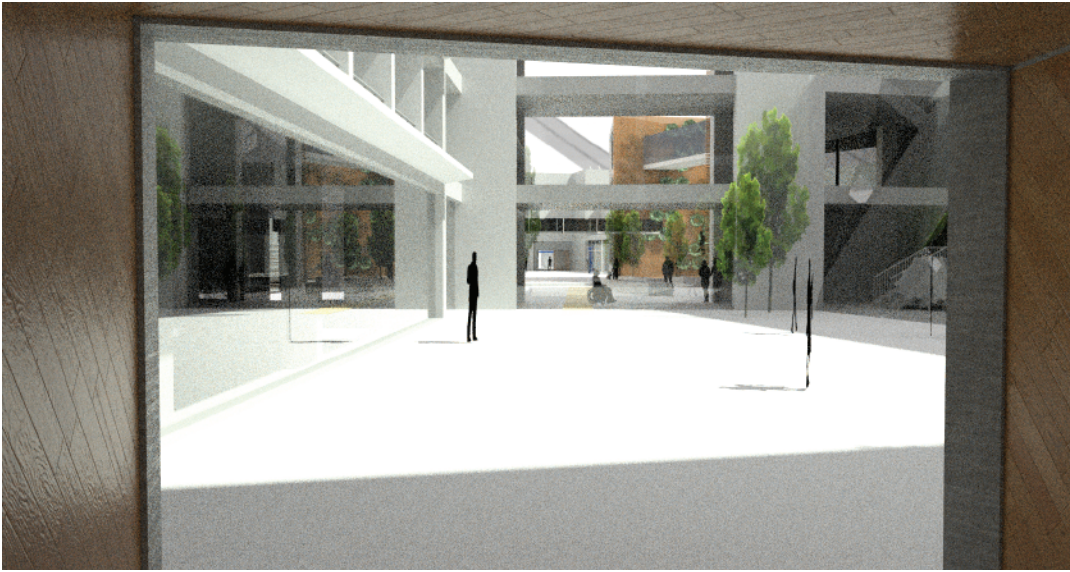
FINAL SPRING PIN-UP

Scheme D - Axonometric and Plan Views



FINAL SPRING PIN-UP

Scheme D - Perspective Views



FINAL DESIGN

FINAL PRESENTATION

Final Boards

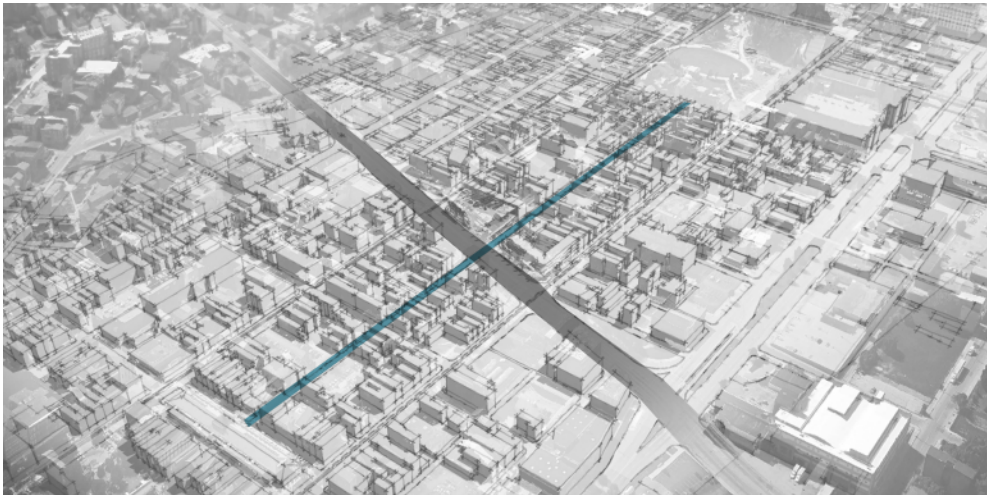


Architecture of Repose: Creating Moments for Retreat and Intimacy

The fast-paced nature of contemporary society acts as a catalyst for anxiety that affects personal well-being. An architecture of repose acts as a venue for moments of relief that grant people opportunities to experience dignified calmness and composure.



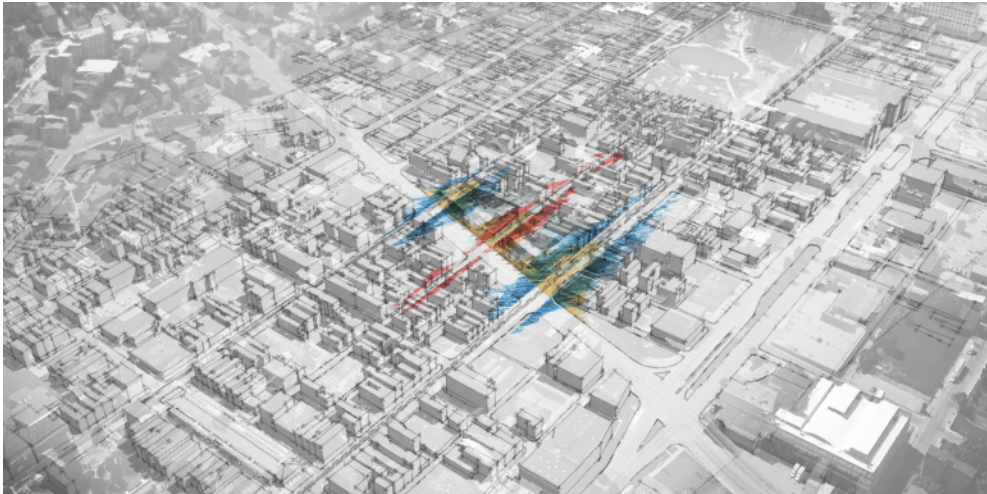
SITE DIAGRAMS



MAJOR SITES AXES

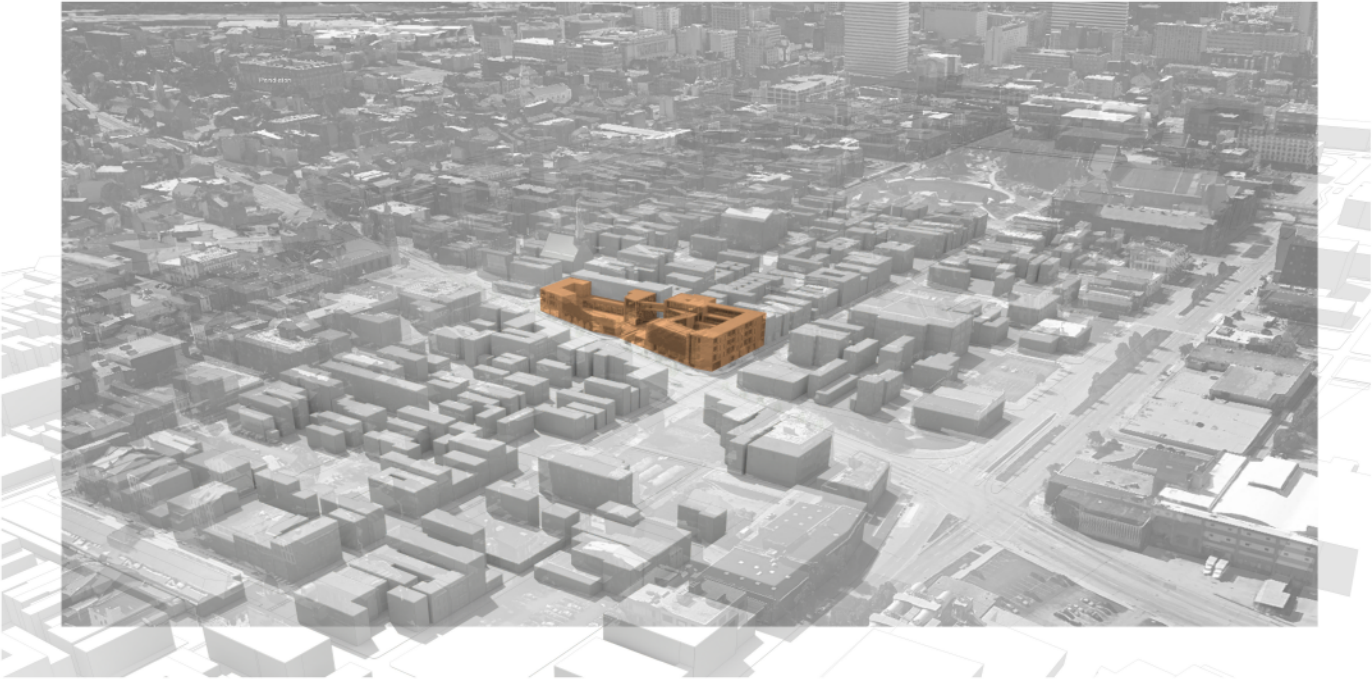


STREETCAR LOOP/STOPS/SITE



SITE FORCES/PLAN PARTI

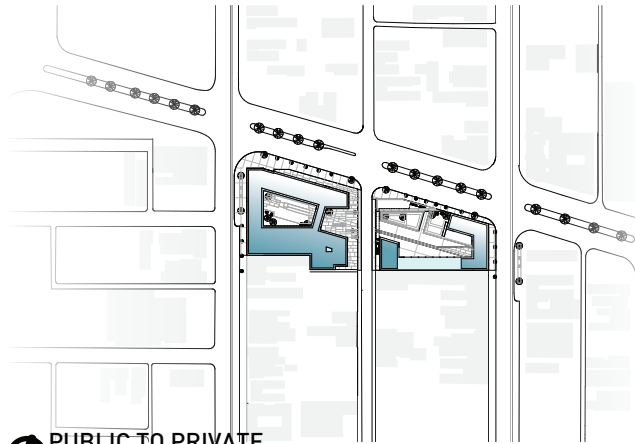
SITE AERIAL



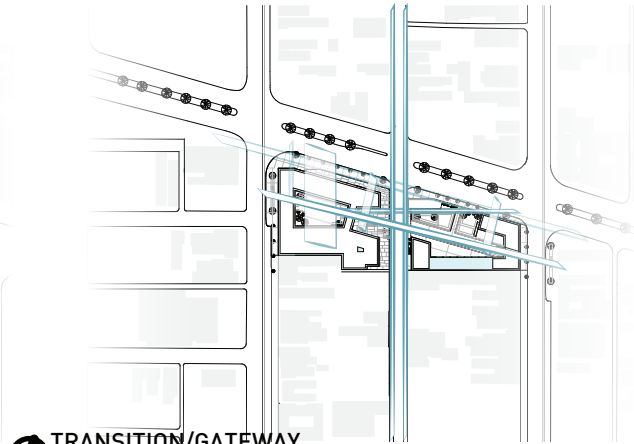
○ SITE AERIAL

SITE PLANS

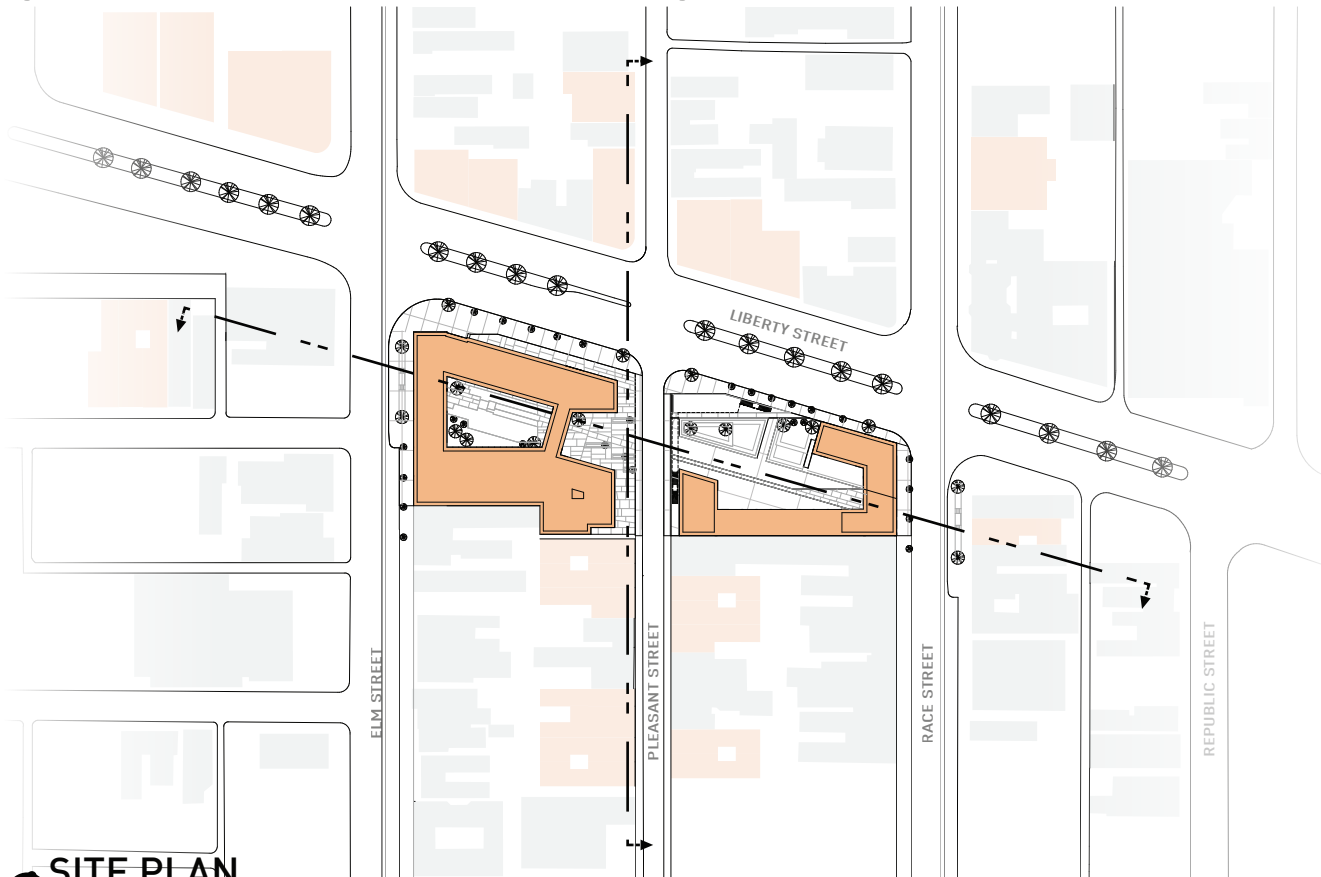
DIAGRAMS & FINAL PLAN



PUBLIC TO PRIVATE
NTS



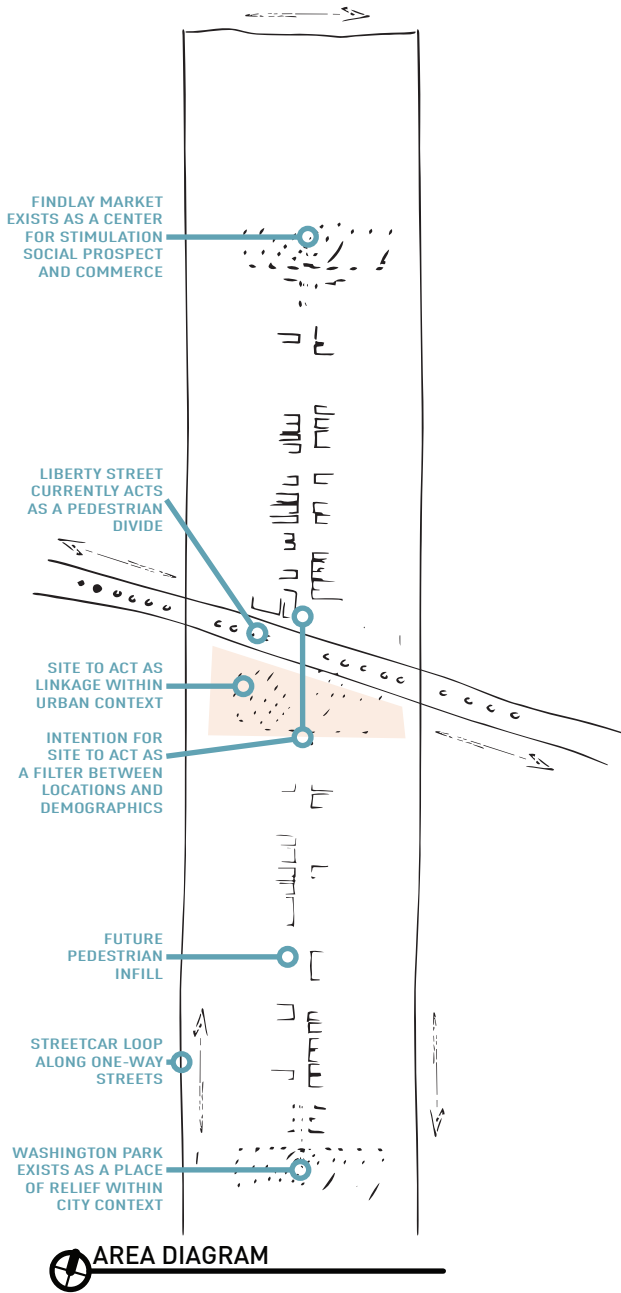
TRANSITION/GATEWAY
NTS



SITE PLAN
NTS

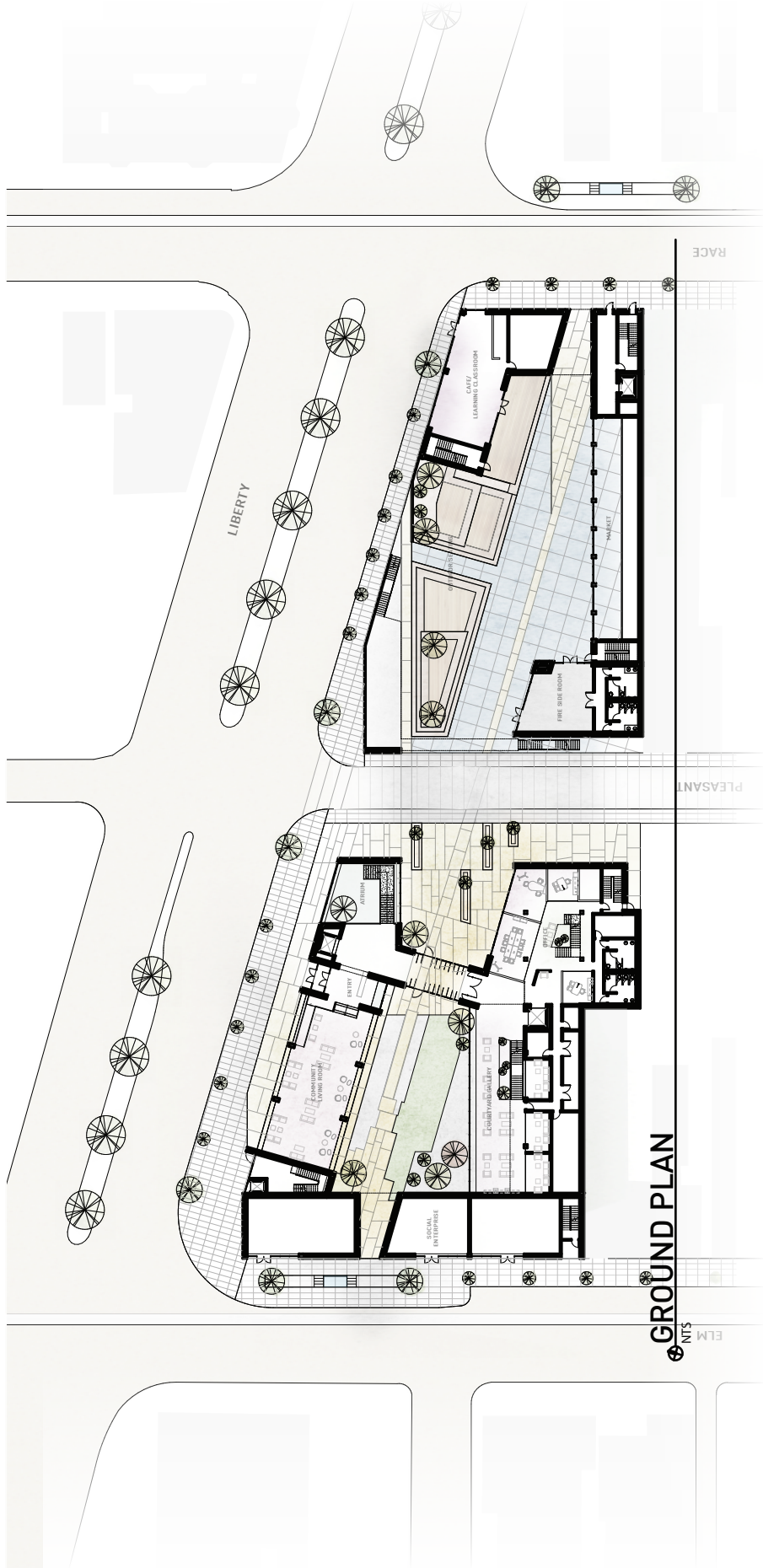
SITE DIAGRAM & SECTIONS

Site Diagram Parti and Site Sections



GROUND FLOOR PLANS

GROUND FLOOR PLANS AND GROUND FLOOR DIAGRAMS



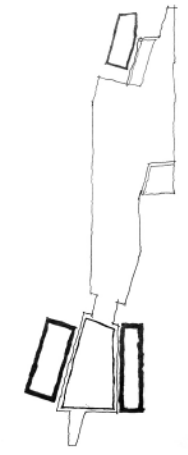
NATURAL LIGHT



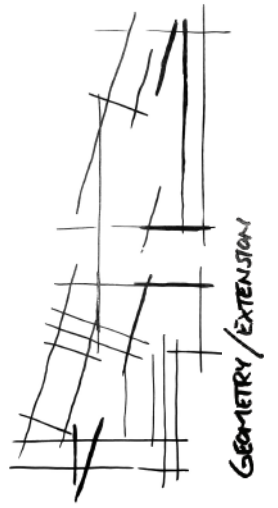
VEGETATION



CIRCULATION



HIERARCHY



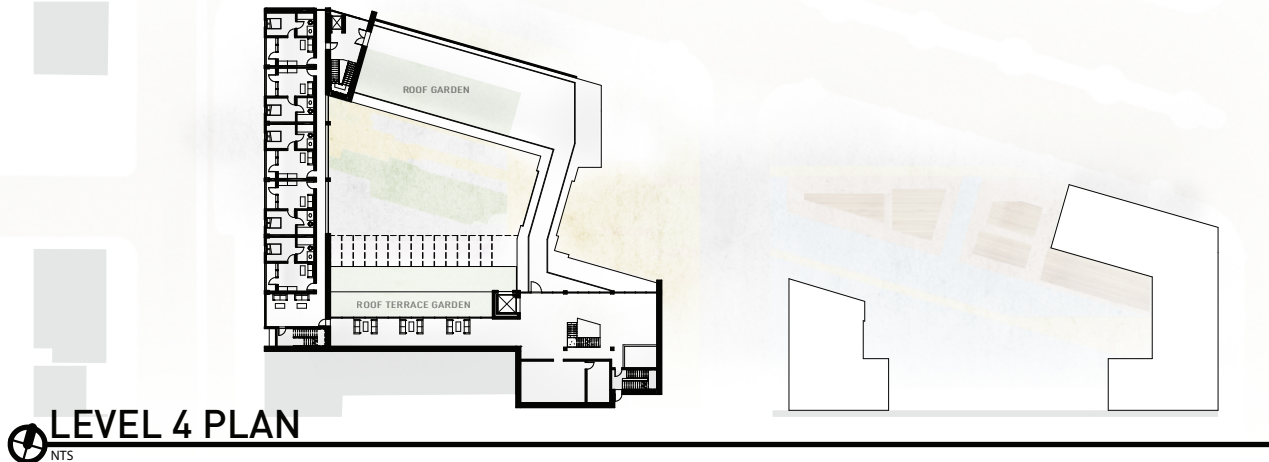
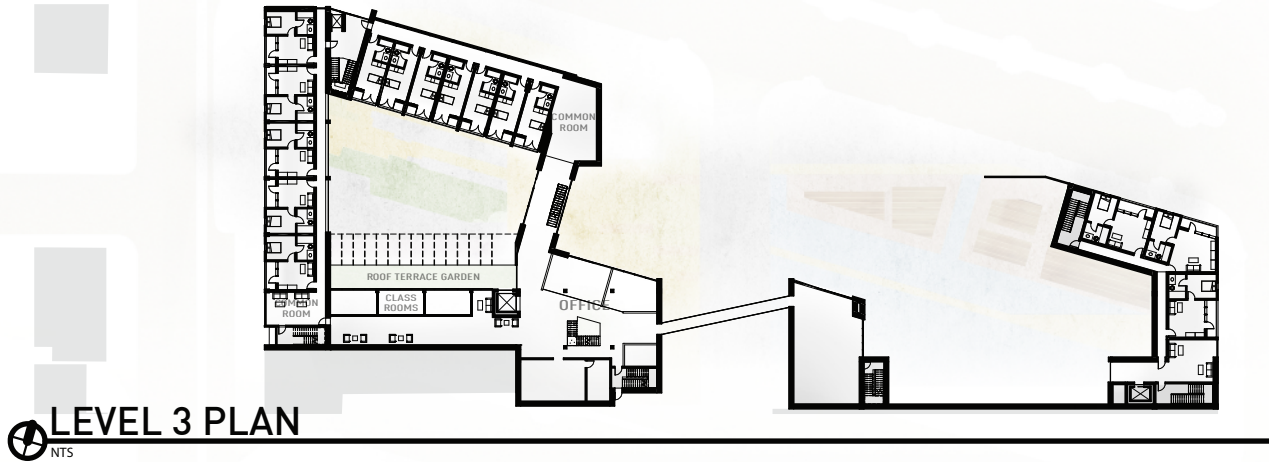
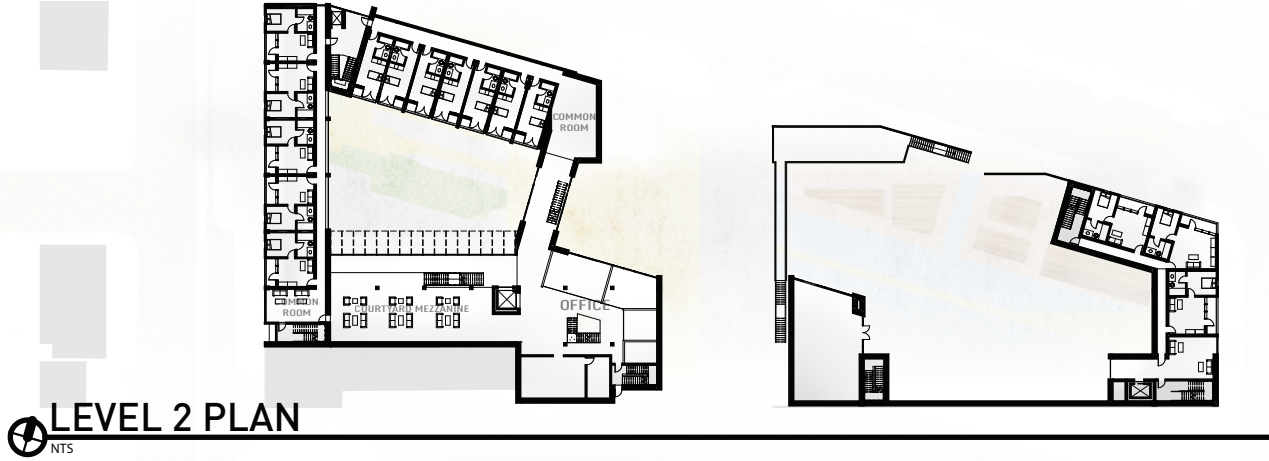
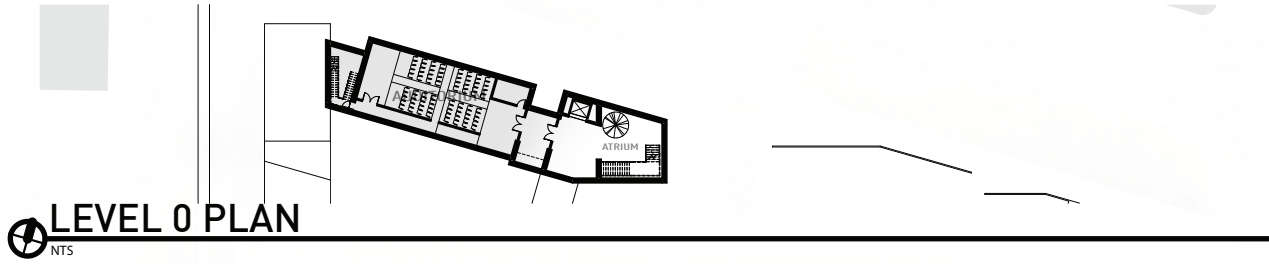
GEOMETRY / EXTENSION



SOLID / VOID

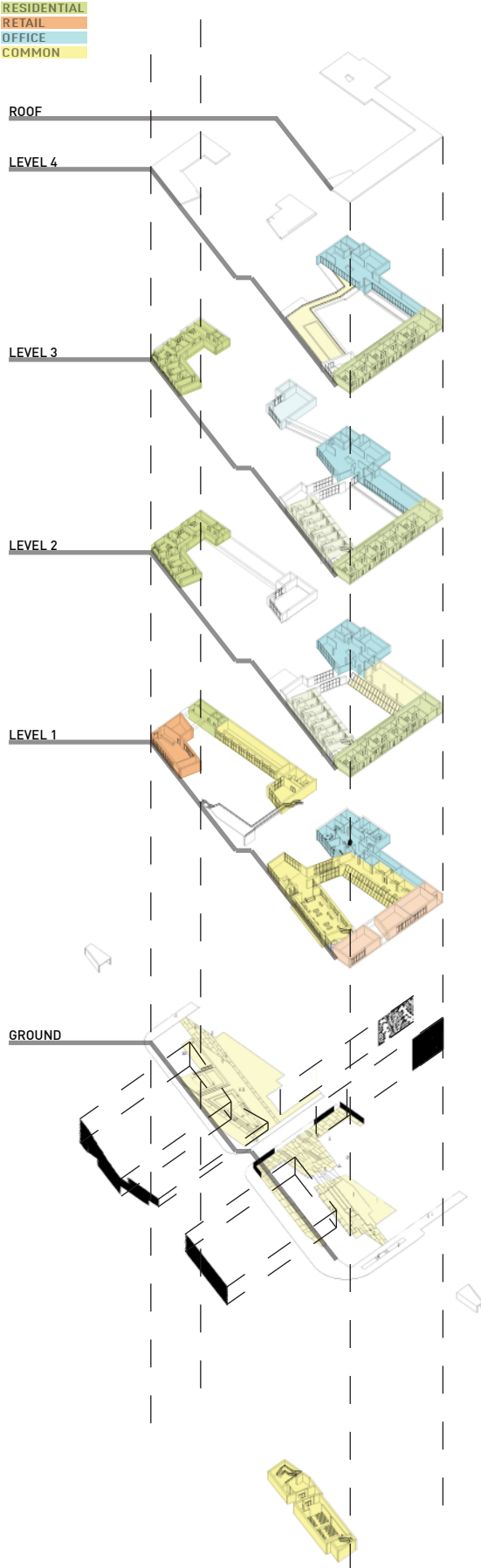


FLOOR PLANS



AXON

Exploded Axonometric



SEQUENCE

Entering Site Along Pleasant Street from Findlay Market (North)



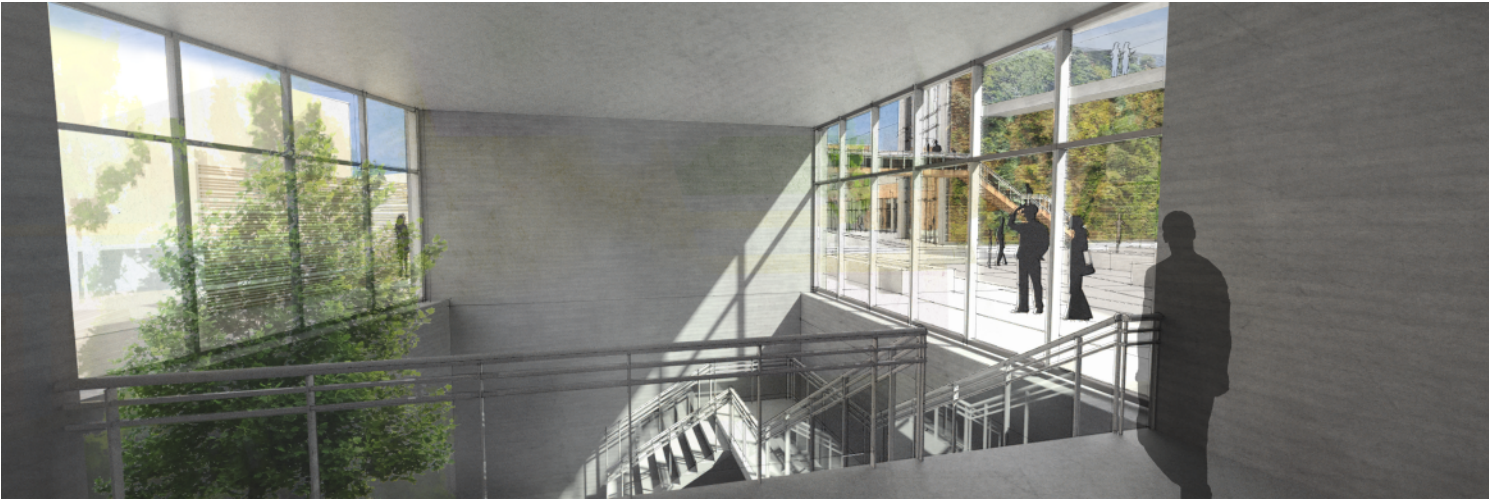
SEQUENCE

Entering Community Living Room



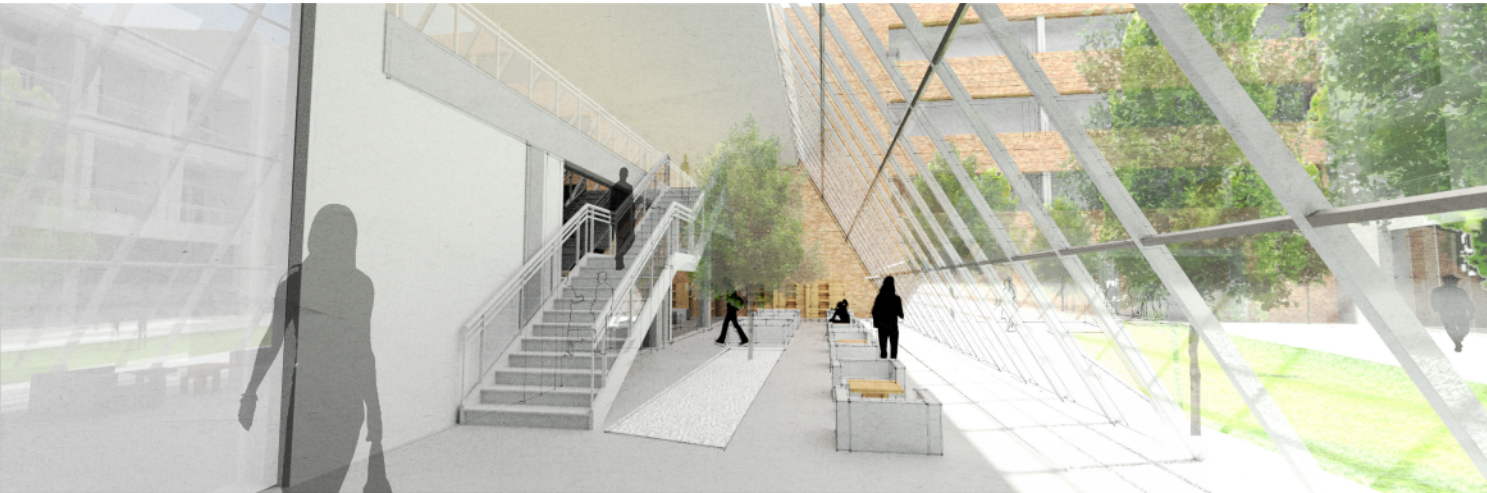
SEQUENCE

Entering Interior Atrium



SEQUENCE

Entering Courtyard Lobby



SEQUENCE

View Into Plaza From Resident Walkway



ELEVATIONS

Building Elevations



 EAST ELEVATION



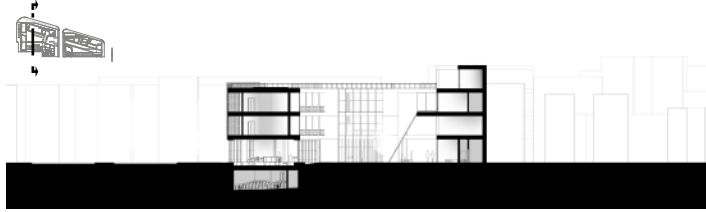
 WEST ELEVATION



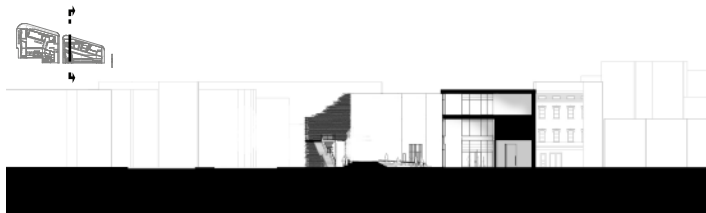
 NORTH ELEVATION

SECTIONS

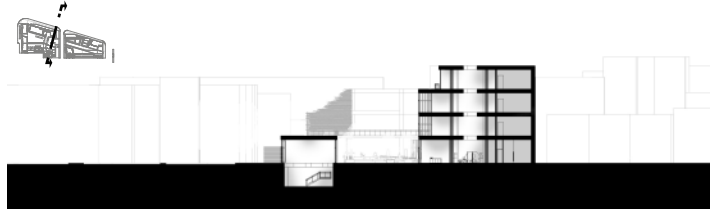
Building Sections & Section Perspective Diagram



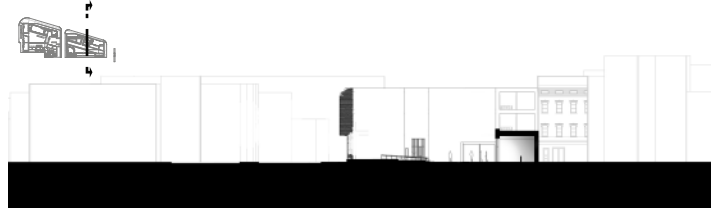
N-S SECTION



N-S SECTION



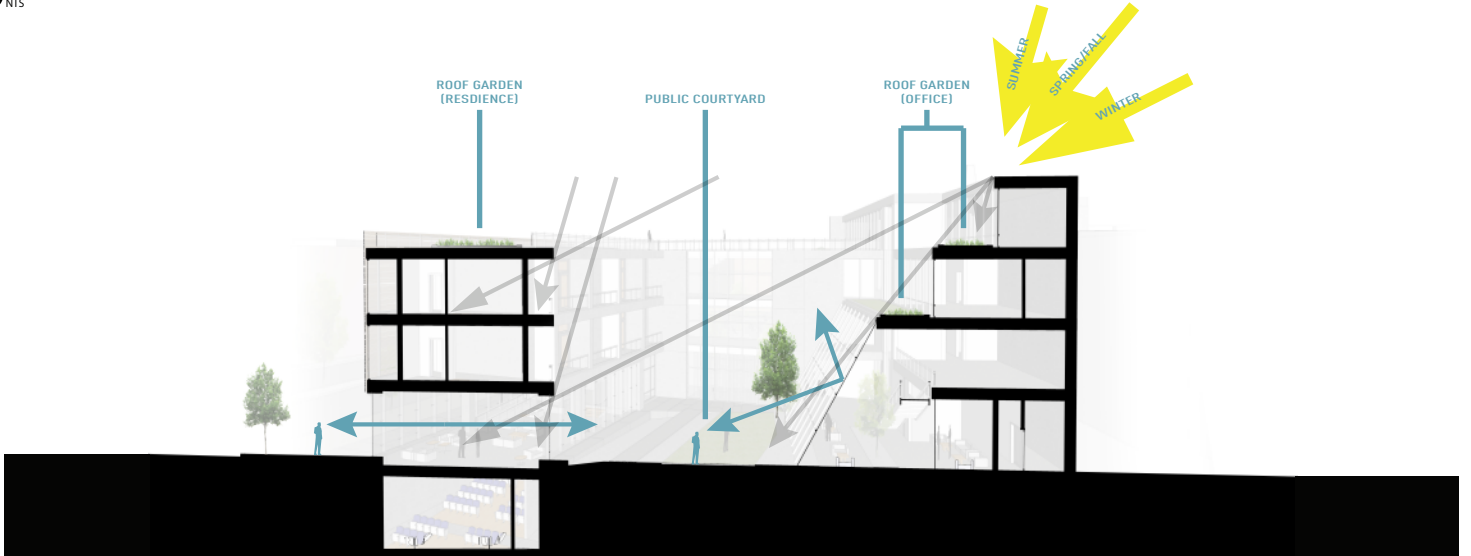
N-S SECTION



N-S SECTION



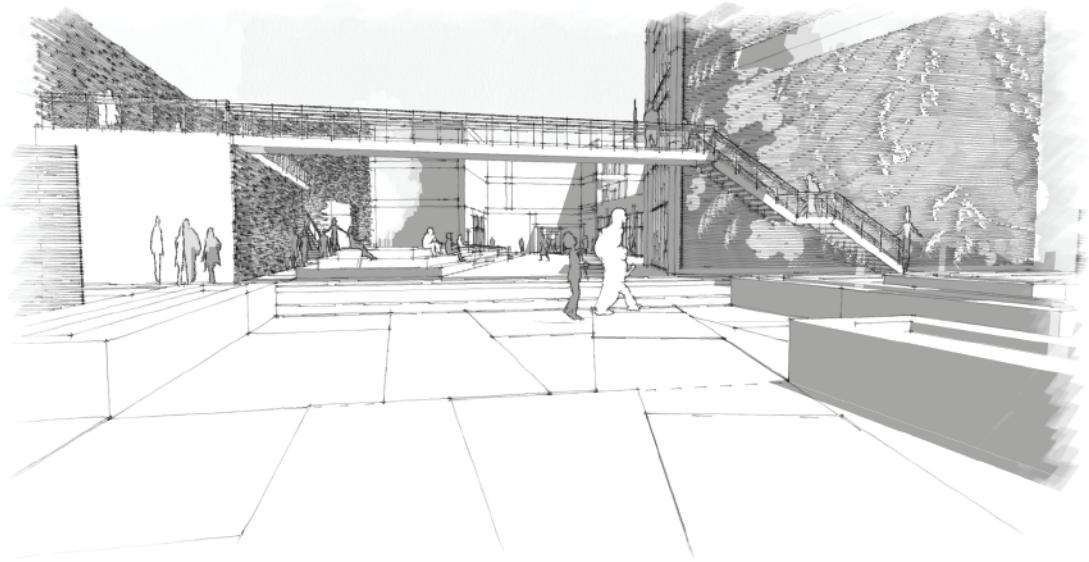
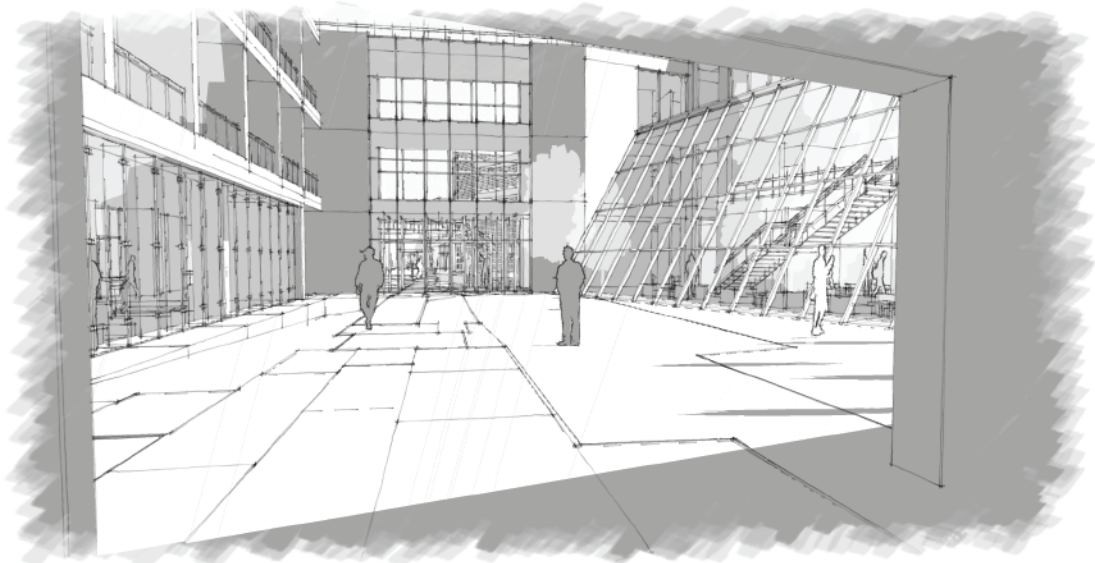
E-W SECTION



N-S SECTION PERSPECTIVE (COURTYARD)

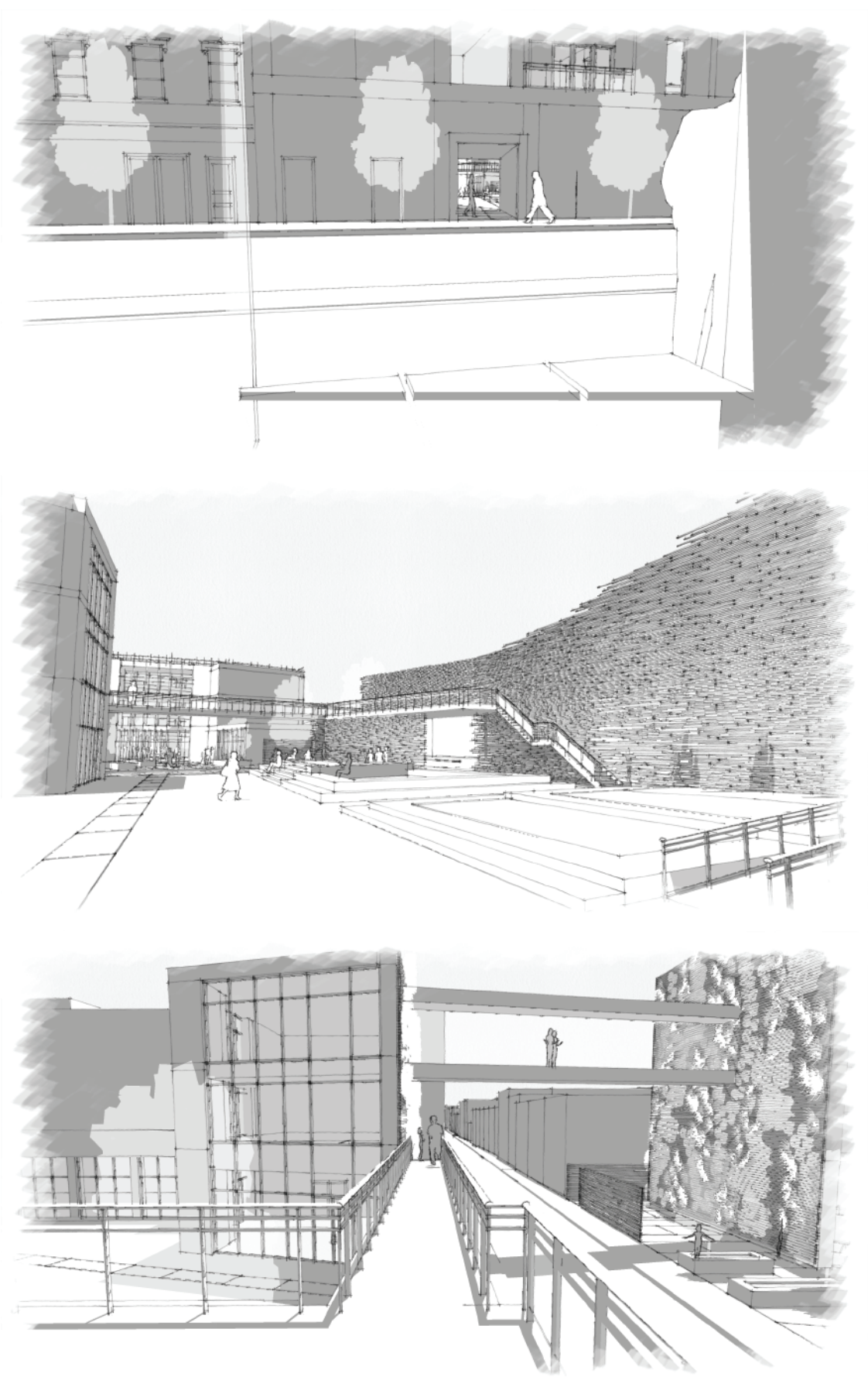
SEQUENCE

Entering From East Streetcar Stop



SEQUENCE

Entering From West Streetcar Stop



PRESENTATION PHOTOS







END

THANK YOU!